



# Recombinant Human Lys-63-specific deubiquitinase BRCC36 (BRCC3)

<b>Product Code</b>	CSB-EP002798HUc0
<b>Relevance</b>	Metalloprotease that specifically cleaves 'Lys-63'-linked polyubiquitin chains. Does not have activity toward 'Lys-48'-linked polyubiquitin chains. Component of the BRCA1-A complex, a complex that specifically recognizes 'Lys-63'-linked ubiquitinated histones H2A and H2AX at DNA lesions sites, leading to target the BRCA1-BARD1 heterodimer to sites of DNA damage at double-strand breaks (DSBs). In the BRCA1-A complex, it specifically roves 'Lys-63'-linked ubiquitin on histones H2A and H2AX, antagonizing the RNF8-dependent ubiquitination at double-strand breaks (DSBs). Catalytic subunit of the BRISC complex, a multiprotein complex that specifically cleaves 'Lys-63'-linked ubiquitin in various substrates. Mediates the specific 'Lys-63'-specific deubiquitination associated with the COP9 signalosome complex (CSN), via the interaction of the BRISC complex with the CSN complex
<b>Abbreviation</b>	Recombinant Human BRCC3 protein
<b>Storage</b>	The shelf life is related to many factors, storage state, buffer ingredients, storage temperature and the stability of the protein itself. Generally, the shelf life of liquid form is 6 months at -20°C/-80°C. The shelf life of lyophilized form is 12 months at -20°C/-80°C.
<b>Uniprot No.</b>	P46736
<b>Alias</b>	BR;CA1-A complex subunit BR;CC36BR;CA1/BR;CA2-containing complex subunit 3BR;CA1/BR;CA2-containing complex subunit 36BRISC complex subunit BR;CC36
<b>Product Type</b>	Recombinant Protein
<b>Immunogen Species</b>	Homo sapiens (Human)
<b>Purity</b>	≥ 90% as determined by SDS-PAGE.
<b>Sequence</b>	AVQVVQAVQAVHLESDAFLVCLNHALSTEKEEVMGLCIGELNDDTRSDSKFAY TGTEMRTVAEKVDAVRIVHIHSVILRRSDKRKDRVEISPEQLSAASTEAEERLAE LTGRPMRVVGGWYHSHPHITVWPSHVDVRTQAMYQMMDQGFVGLIFSCFIEDK NTKTGRVLYTCFQSIQAQKSSESLHGPRDFWSSSQHISIEGQKEEERYERIEIPI HIVPHVTIGKVCLESAVELPKILCQEEQDAYRRIHSLTHLDSVTKIHNGSVFTKN LCSQMSAVSGPLLQWLEDRLEQNQQHLQELQQEKEELMQELSSLE
<b>Research Area</b>	Epigenetics and Nuclear Signaling
<b>Source</b>	E.coli
<b>Target Names</b>	BRCC3
<b>Expression Region</b>	2-316aa
<b>Notes</b>	Repeated freezing and thawing is not recommended. Store working aliquots at 4°C for up to one week.

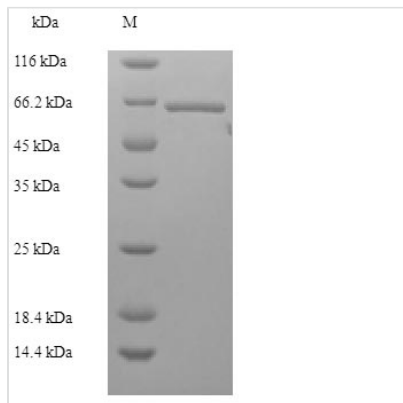


**Tag Info** N-terminal 6xHis-GST-tagged

**Mol. Weight** 65.9kDa

**Protein Length** Full Length of Mature Protein

**Image**



(Tris-Glycine gel) Discontinuous SDS-PAGE (reduced) with 5% enrichment gel and 15% separation gel.

**Reconstitution**

We recommend that this vial be briefly centrifuged prior to opening to bring the contents to the bottom. Please reconstitute protein in deionized sterile water to a concentration of 0.1-1.0 mg/mL. We recommend to add 5-50% of glycerol (final concentration) and aliquot for long-term storage at -20°C/-80°C. Our default final concentration of glycerol is 50%. Customers could use it as reference.

**Shelf Life**

The shelf life is related to many factors, storage state, buffer ingredients, storage temperature and the stability of the protein itself. Generally, the shelf life of liquid form is 6 months at -20°C/-80°C. The shelf life of lyophilized form is 12 months at -20°C/-80°C.