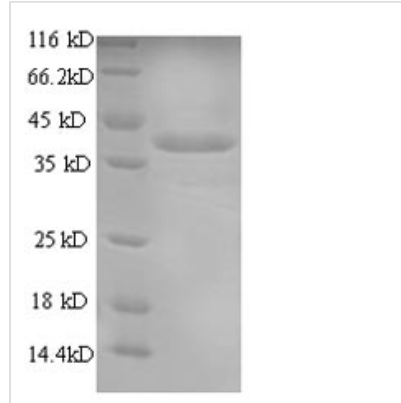




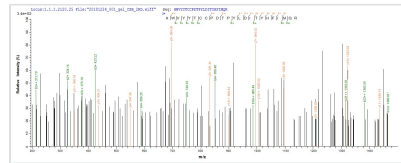
Recombinant Tetronarce californica Acetylcholine receptor subunit alpha (CHRNA1), partial

Product Code	CSB-EP005386TOTa2
Relevance	After binding acetylcholine, the AChR responds by an extensive change in conformation that affects all subunits and leads to opening of an ion-conducting channel across the plasma membrane.
Abbreviation	Recombinant Tetronarce californica CHRNA1 protein, partial
Storage	The shelf life is related to many factors, storage state, buffer ingredients, storage temperature and the stability of the protein itself. Generally, the shelf life of liquid form is 6 months at -20°C/-80°C. The shelf life of lyophilized form is 12 months at -20°C/-80°C.
Uniprot No.	P02710
Product Type	Recombinant Proteins
Immunogen Species	Tetronarce californica (Pacific electric ray) (Torpedo californica)
Purity	Greater than 90% as determined by SDS-PAGE.
Sequence	SEHETRLVANLLENYNKVIKIRPVEHHTHFVDITVGLQLIQLISVDEVNQIVETNVRRLRQQWIDVRLRWNPADYGGIKKIRLPSDDVWLPDLVLYNNADGDFAIHMTKLLLDYTGKIMWTPPAIFKSYCEIIVTHFPFDQQNCTMKLGIWTYDGTKVSIPESTRPDLSTFMESGEWVMKDYRGWKHWVYYTCCPDTPYLDITYHFIMQRI
Research Area	Others
Source	E.coli
Target Names	CHRNA1
Expression Region	25-234aa
Notes	Repeated freezing and thawing is not recommended. Store working aliquots at 4°C for up to one week.
Tag Info	N-terminal 6xHis-SUMO-tagged
Mol. Weight	40.8kDa
Protein Length	Extracellular Domain

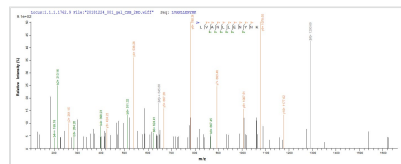
Image



(Tris-Glycine gel) Discontinuous SDS-PAGE (reduced) with 5% enrichment gel and 15% separation gel.



Based on the SEQUEST from database of E.coli host and target protein, the LC-MS/MS Analysis result of CSB-EP005386TOTa2 could indicate that this peptide derived from E.coli-expressed *Tetronarce californica* (Pacific electric ray) (Torpedo californica) CHRNA1.



Based on the SEQUEST from database of E.coli host and target protein, the LC-MS/MS Analysis result of CSB-EP005386TOTa2 could indicate that this peptide derived from E.coli-expressed *Tetronarce californica* (Pacific electric ray) (Torpedo californica) CHRNA1.

Shelf Life

The shelf life is related to many factors, storage state, buffer ingredients, storage temperature and the stability of the protein itself.

Generally, the shelf life of liquid form is 6 months at -20°C/-80°C. The shelf life of lyophilized form is 12 months at -20°C/-80°C.