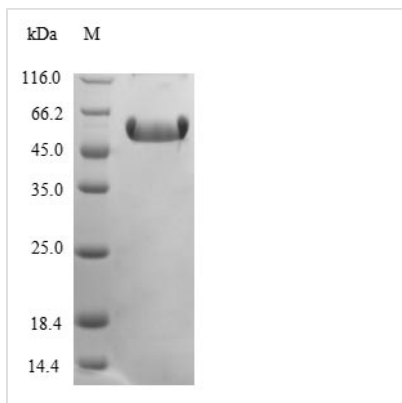




Recombinant Mouse CCN family member 2 (Ccn2), partial

Product Code	CSB-EP006147MOe0
Relevance	Major connective tissue mitogen secreted by vascular endothelial cells. Promotes proliferation and differentiation of chondrocytes. Mediates heparin- and divalent cation-dependent cell adhesion in many cell types including fibroblasts, myofibroblasts, endothelial and epithelial cells. Enhances fibroblast growth factor-induced DNA synthesis.
Abbreviation	Recombinant Mouse Ccn2 protein, partial
Storage	The shelf life is related to many factors, storage state, buffer ingredients, storage temperature and the stability of the protein itself. Generally, the shelf life of liquid form is 6 months at -20°C/-80°C. The shelf life of lyophilized form is 12 months at -20°C/-80°C.
Uniprot No.	P29268
Alias	CCN family member 2Hypertrophic chondrocyte-specific protein 24Protein FISP-12
Product Type	Recombinant Protein
Immunogen Species	Mus musculus (Mouse)
Purity	Greater than 90% as determined by SDS-PAGE.
Sequence	QDCSAQCQCAAEAAPHCPAGVSLVLDGCGCCRVC AKQLGELCTERDPCDPH KGLFCDFGSPANRKIGVCTAKDGAPCVFGGSVYRSGESFQSSCKYQCTCLDG AVGCVPLCSMDVRLPSPDCPFPRRVKLPGKCCEEWVCDEPKDRTAVGPALA AYRLEDTFGPDTMMRANCLVQTTEWSACSKTCGMGISTRVTDNNTFCRLEK QSRLCMVRPCEADLEENIKKGKCKIRTPKIAKPVKFE LSGCTSVKTYRAKFCGV CTDGRCCPHRTTTL PVEFKCPDGEIMKKNMMFIKTCACHYNC PGDNDIFESL YYRKMY
Research Area	Cardiovascular
Source	E.coli
Target Names	Ccn2
Expression Region	26-344aa
Notes	Repeated freezing and thawing is not recommended. Store working aliquots at 4°C for up to one week.
Tag Info	N-terminal GST-tagged
Mol. Weight	62.0kDa
Protein Length	Partial

Image



(Tris-Glycine gel) Discontinuous SDS-PAGE (reduced) with 5% enrichment gel and 15% separation gel.

Reconstitution

We recommend that this vial be briefly centrifuged prior to opening to bring the contents to the bottom. Please reconstitute protein in deionized sterile water to a concentration of 0.1-1.0 mg/mL. We recommend to add 5-50% of glycerol (final concentration) and aliquot for long-term storage at $-20^{\circ}\text{C}/-80^{\circ}\text{C}$. Our default final concentration of glycerol is 50%. Customers could use it as reference.

Shelf Life

The shelf life is related to many factors, storage state, buffer ingredients, storage temperature and the stability of the protein itself. Generally, the shelf life of liquid form is 6 months at $-20^{\circ}\text{C}/-80^{\circ}\text{C}$. The shelf life of lyophilized form is 12 months at $-20^{\circ}\text{C}/-80^{\circ}\text{C}$.