

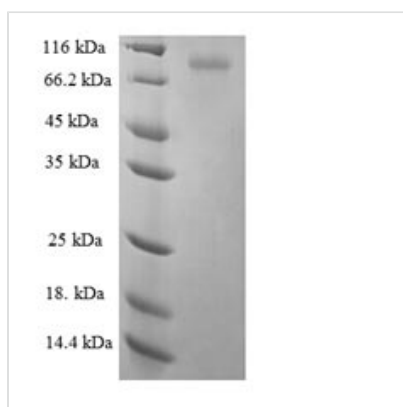


Recombinant Human Keratin, type II cytoskeletal 6A (KRT6A)

| | |
|--------------------------|---|
| Product Code | CSB-EP012561HUe0 |
| Relevance | Epidermis-specific type I keratin involved in wound healing. Involved in the activation of follicular keratinocytes after wounding, while it does not play a major role in keratinocyte proliferation or migration. Participates in the regulation of epithelial migration by inhibiting the activity of SRC during wound repair. |
| Abbreviation | Recombinant Human KRT6A protein |
| Storage | The shelf life is related to many factors, storage state, buffer ingredients, storage temperature and the stability of the protein itself. Generally, the shelf life of liquid form is 6 months at -20°C/-80°C. The shelf life of lyophilized form is 12 months at -20°C/-80°C. |
| Uniprot No. | P02538 |
| Alias | Cytokeratin-6A ;CK-6ACytokeratin-6D ;CK-6DKeratin-6A ;K6AType-II keratin Kb6Allergen: Hom s 5 |
| Product Type | Recombinant Protein |
| Immunogen Species | Homo sapiens (Human) |
| Purity | Greater than 90% as determined by SDS-PAGE. |
| Sequence | ASTSTTIRSHSSRRGFSANSARLPGVSRSGFSSVSVSRSRGSGGLGGACGG AGFGSRSLYGLGGSKRISIGGGSCAISGGYGSRAGGSYGFGGAGSGFGFGG GAGIGFGLGGGAGLAGGFGGPGFPVCPGGIQEVTVNQSLLTPLNLQIDPTIQ RVRAEEREQIKTLNKNKFASFIDKVRFLQEQNKVLETKWTLQEQGKTQVRQNL EPLFEQYINNLRQLDSIVGERGRLDSELRGMQDLVEDFKNKYEDEINKRTAA ENEFVTLKKDVDAAYMKNKVELQAKADTLTDEINFLRALYDAELSQMQTHISDTS VVLSDMNNRNLDLDSIIAEVKAQYEEIAQRSRAEAEESWYQTKYEELQVTAGRH GDDLNRNTKQEI AEINRMIQRLRSEIDHVKKQCANLQAAIADAEQRGEMALKDAK NKLEGLDALQKAKQDLARLLKEYQELMNVKLALDVEIATYRKLLLEGEECRNLN GEGVGQVNISVVQSTVSSGYGGASGVGSGGLGLGGGSSYSYGSGLGVGGGFS SSSGRAIGGGLSSVGGGSSTIKYTTTSSSSRKSYPKH |
| Research Area | Signal Transduction |
| Source | E.coli |
| Target Names | KRT6A |
| Expression Region | 2-564aa |
| Notes | Repeated freezing and thawing is not recommended. Store working aliquots at 4°C for up to one week. |
| Tag Info | N-terminal GST-tagged |
| Mol. Weight | 86.9kDa |
| Protein Length | Full Length of Mature Protein |



Image



(Tris-Glycine gel) Discontinuous SDS-PAGE (reduced) with 5% enrichment gel and 15% separation gel.

Reconstitution

We recommend that this vial be briefly centrifuged prior to opening to bring the contents to the bottom. Please reconstitute protein in deionized sterile water to a concentration of 0.1-1.0 mg/mL. We recommend to add 5-50% of glycerol (final concentration) and aliquot for long-term storage at -20°C/-80°C. Our default final concentration of glycerol is 50%. Customers could use it as reference.

Shelf Life

The shelf life is related to many factors, storage state, buffer ingredients, storage temperature and the stability of the protein itself.

Generally, the shelf life of liquid form is 6 months at -20°C/-80°C. The shelf life of lyophilized form is 12 months at -20°C/-80°C.