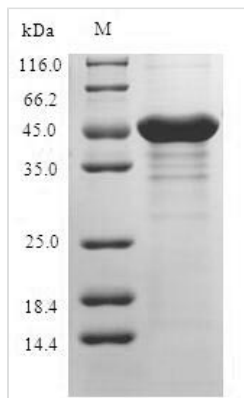




Recombinant Human Retinoschisin (RS1)

Product Code	CSB-EP020534HUe0
Relevance	May be active in cell adhesion processes during retinal development.
Abbreviation	Recombinant Human RS1 protein
Storage	The shelf life is related to many factors, storage state, buffer ingredients, storage temperature and the stability of the protein itself. Generally, the shelf life of liquid form is 6 months at -20°C/-80°C. The shelf life of lyophilized form is 12 months at -20°C/-80°C.
Uniprot No.	O15537
Alias	X-linked juvenile retinoschisis protein
Product Type	Recombinant Protein
Immunogen Species	Homo sapiens (Human)
Purity	≥ 90% as determined by SDS-PAGE.
Sequence	STEDGEDPWYQKACKCDCQGGPNALWSAGATSLDCIPECPYHKPLGFESG EVTDPQITCSNPEQYVGGWYSSWTANKARLNSQGFCAWLSKFDSSQWLQI DLKEIKVISGILTQGRCDIDEMTKYSVQYRTDERLNWIYYKDQTGNNRVFIG NSDRTSTVQNLLRPPIISRIFIRLIPLGWHVRIARMELLECVSKCA
Research Area	Cell Adhesion
Source	E.coli
Target Names	RS1
Expression Region	24-224aa
Notes	Repeated freezing and thawing is not recommended. Store working aliquots at 4°C for up to one week.
Tag Info	N-terminal GST-tagged
Mol. Weight	50.0kDa
Protein Length	Full Length of Mature Protein

Image



(Tris-Glycine gel) Discontinuous SDS-PAGE (reduced) with 5% enrichment gel and 15% separation gel.



Reconstitution

We recommend that this vial be briefly centrifuged prior to opening to bring the contents to the bottom. Please reconstitute protein in deionized sterile water to a concentration of 0.1-1.0 mg/mL. We recommend to add 5-50% of glycerol (final concentration) and aliquot for long-term storage at -20°C/-80°C. Our default final concentration of glycerol is 50%. Customers could use it as reference.

Shelf Life

The shelf life is related to many factors, storage state, buffer ingredients, storage temperature and the stability of the protein itself. Generally, the shelf life of liquid form is 6 months at -20°C/-80°C. The shelf life of lyophilized form is 12 months at -20°C/-80°C.