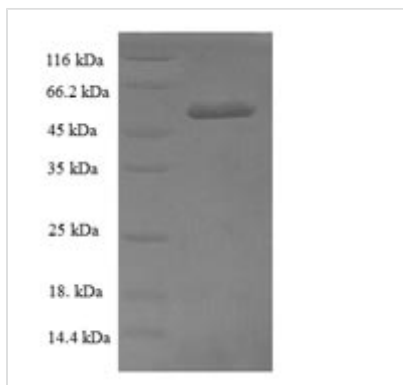




Recombinant Human Thioredoxin-like protein 1 (TXNL1)

Product Code	CSB-EP025384HUa2
Relevance	Active thioredoxin with a redox potential of about -250 mV.
Abbreviation	Recombinant Human TXNL1 protein
Storage	The shelf life is related to many factors, storage state, buffer ingredients, storage temperature and the stability of the protein itself. Generally, the shelf life of liquid form is 6 months at -20°C/-80°C. The shelf life of lyophilized form is 12 months at -20°C/-80°C.
Uniprot No.	O43396
Alias	32 kDa thioredoxin-related protein
Product Type	Recombinant Protein
Immunogen Species	Homo sapiens (Human)
Purity	≥ 90% as determined by SDS-PAGE.
Sequence	VGVKPVGSDPDFQPELSGAGSRLAVVKFTMRGCGPCLRIAPAFSSMSNKYPQ AVFLEVVDVHQCQGTAAATNNISATPTFLFFRNKVRIDQYQGADAVGLEEKIKQHL ENDPGSNEDTDIPKGYMDLMPFINKAGCECLNESDEHGFDNCLRKDTTFLESD CDEQLLITVAFNQPVKLYSMKFQGPDNGQGPKYVKIFINLPRSMDFEEAERSE PTQALELTEDDIKEDGIVPLRYVKFQNVNSVTIFVQSNQGEEETTRISYFTFIGT PVQATNMNDFKR VVGKKGESH
Research Area	Transport
Source	E.coli
Target Names	TXNL1
Expression Region	2-289aa
Notes	Repeated freezing and thawing is not recommended. Store working aliquots at 4°C for up to one week.
Tag Info	N-terminal 6xHis-SUMO-tagged
Mol. Weight	48.1kDa
Protein Length	Full Length of Mature Protein

Image



(Tris-Glycine gel) Discontinuous SDS-PAGE (reduced) with 5% enrichment gel and 15% separation gel.

Reconstitution

We recommend that this vial be briefly centrifuged prior to opening to bring the contents to the bottom. Please reconstitute protein in deionized sterile water to a concentration of 0.1-1.0 mg/mL. We recommend to add 5-50% of glycerol (final concentration) and aliquot for long-term storage at -20°C/-80°C. Our default final concentration of glycerol is 50%. Customers could use it as reference.

Shelf Life

The shelf life is related to many factors, storage state, buffer ingredients, storage temperature and the stability of the protein itself. Generally, the shelf life of liquid form is 6 months at -20°C/-80°C. The shelf life of lyophilized form is 12 months at -20°C/-80°C.