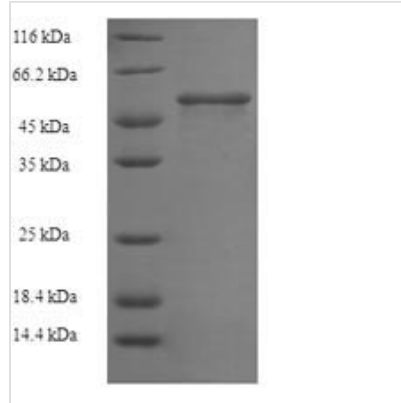


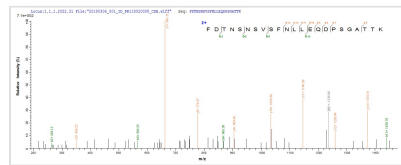


Recombinant Clostridium tetani Tetanus toxin (tetX), partial

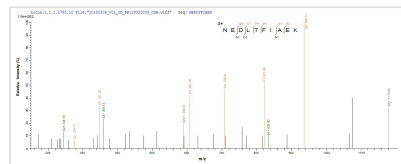
Product Code	CSB-EP356416CMN1
Relevance	Tetanus toxin acts by inhibiting neurotransmitter release. It binds to peripheral neuronal synapses, is internalized and moves by retrograde transport up the axon into the spinal cord where it can move between postsynaptic and presynaptic neurons. It inhibits neurotransmitter release by acting as a zinc endopeptidase that catalyzes the hydrolysis of the '76-Gln- -Phe-77' bond of synaptobrevin-2.
Abbreviation	Recombinant Clostridium tetani tetX protein, partial
Storage	The shelf life is related to many factors, storage state, buffer ingredients, storage temperature and the stability of the protein itself. Generally, the shelf life of liquid form is 6 months at -20°C/-80°C. The shelf life of lyophilized form is 12 months at -20°C/-80°C.
Uniprot No.	P04958
Product Type	Recombinant Proteins
Immunogen Species	Clostridium tetani (strain Massachusetts / E88)
Purity	≥ 90% as determined by SDS-PAGE.
Sequence	SLLDKFDTNSNSVSFNLLEQDPSGATTKSAMLTNLIIFGPGPVLNKNEVRGIVLR VDNKNYFPCRDGFGSIMQMAFCPEYVPTFDNVIENTSLTIGKSKYFQDPALLL MHელიHVLHGLYGMQVSSHEIIPSKQEIYMQHTYPISAEELFTFGGQDANLISIDI KNDLYEKTLNDYKAIANKLSQVTSCNDPNIDIDSYKQIYQQKYQFDKDSNGQYI VNEDKFQILYNSIMYGFTIEILGKKFNIKTRLSYFSMNHDPVKIPNLLDDTIYNDT EGFNIESKDLKSEYKQGNMRVNTNAFRNVDSGLVSKLIGLCKKIIPPTNIRENL YNRTASLTDLGGELCIKIKNEDLTFIAEKNSFSEEPFQDEIVSYNTKNKPLNFNY SLDKIIVDYNLQSKITLPNDRTPVTKGIPYAPEYKSNAASTIEIHNIDDNTIYQYL YAQKSPTTL
Research Area	Others
Source	E.coli
Target Names	tetX
Expression Region	123-573aa
Notes	Repeated freezing and thawing is not recommended. Store working aliquots at 4°C for up to one week.
Tag Info	N-terminal 6xHis-tagged
Mol. Weight	55.4kDa
Protein Length	Partial
Image	



(Tris-Glycine gel) Discontinuous SDS-PAGE (reduced) with 5% enrichment gel and 15% separation gel.



Based on the SEQUEST from database of E.coli host and target protein, the LC-MS/MS Analysis result of CSB-EP356416CMN1 could indicate that this peptide derived from E.coli-expressed Clostridium tetani (strain Massachusetts / E88) tetX.



Based on the SEQUEST from database of E.coli host and target protein, the LC-MS/MS Analysis result of CSB-EP356416CMN1 could indicate that this peptide derived from E.coli-expressed Clostridium tetani (strain Massachusetts / E88) tetX.

Shelf Life

The shelf life is related to many factors, storage state, buffer ingredients, storage temperature and the stability of the protein itself.

Generally, the shelf life of liquid form is 6 months at -20°C/-80°C. The shelf life of lyophilized form is 12 months at -20°C/-80°C.