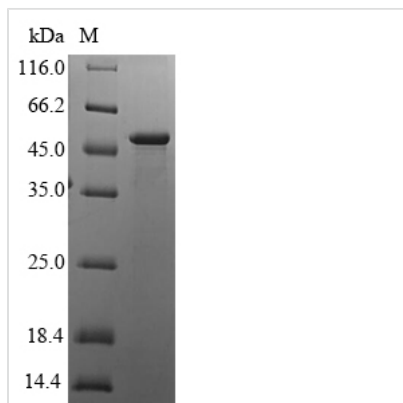




Recombinant Human HLA class I histocompatibility antigen, alpha chain G (HLA-G)

Product Code	CSB-EP010509HUa2
Relevance	Involved in the presentation of foreign antigens to the immune syst. Plays a role in maternal tolerance of the fetus by mediating protection from the deleterious effects of natural killer cells, cytotoxic T-lymphocytes, macrophages and mononuclear cells.
Abbreviation	Recombinant Human HLA-G protein
Storage	The shelf life is related to many factors, storage state, buffer ingredients, storage temperature and the stability of the protein itself. Generally, the shelf life of liquid form is 6 months at -20°C/-80°C. The shelf life of lyophilized form is 12 months at -20°C/-80°C.
Uniprot No.	P17693
Alias	HLA G antigen;MHC class I antigen G
Product Type	Recombinant Protein
Immunogen Species	Homo sapiens (Human)
Purity	Greater than 90% as determined by SDS-PAGE.
Sequence	GSHSMRYFSAAVSRPGRGEPRIAMGYVDDTQFVRFDSACSACPRMEPRAPW VEQEGPEYWEEETRNTKAHAQTDRMNLQTLRGYYNQSEASSHTLQWMIGCD LGSDGRLLRGYEQYAYDGKDYLALNEDLRSWTAADTAAQISKRKCEAANVAE QRRAYLEGTCVEWLHRYLENGKEMLRADPPKTHVTHHPVFDYEATLRCWA LGFYP AEIILTWQRDGEDQTQDVELVETRPAGDGTGFQKWA AVVVPSGEEQRY TCHVQHEGLPEPLMRWKQSSLPTIPIMGIVAGLVVLA AVVTGA AVA AVLWRK KSSD
Research Area	Immunology
Source	E.coli
Target Names	HLA-G
Expression Region	25-338aa
Notes	Repeated freezing and thawing is not recommended. Store working aliquots at 4°C for up to one week.
Tag Info	N-terminal 6xHis-SUMO-tagged
Mol. Weight	51.6kDa
Protein Length	Full Length of Mature Protein
Image	



(Tris-Glycine gel) Discontinuous SDS-PAGE (reduced) with 5% enrichment gel and 15% separation gel.

Reconstitution

We recommend that this vial be briefly centrifuged prior to opening to bring the contents to the bottom. Please reconstitute protein in deionized sterile water to a concentration of 0.1-1.0 mg/mL. We recommend to add 5-50% of glycerol (final concentration) and aliquot for long-term storage at $-20^{\circ}\text{C}/-80^{\circ}\text{C}$. Our default final concentration of glycerol is 50%. Customers could use it as reference.

Shelf Life

The shelf life is related to many factors, storage state, buffer ingredients, storage temperature and the stability of the protein itself. Generally, the shelf life of liquid form is 6 months at $-20^{\circ}\text{C}/-80^{\circ}\text{C}$. The shelf life of lyophilized form is 12 months at $-20^{\circ}\text{C}/-80^{\circ}\text{C}$.