

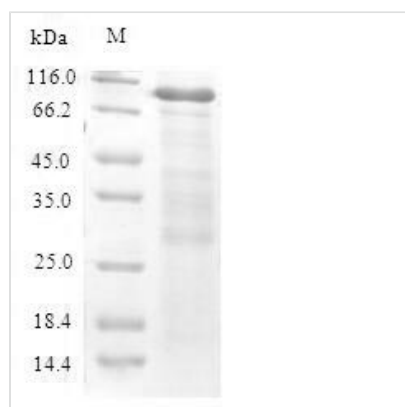


# Recombinant Mouse Cystathionine beta-synthase (Cbs)

<b>Product Code</b>	CSB-EP849665MOa2
<b>Relevance</b>	Only known pyridoxal phosphate-dependent enzyme that contains heme. Important regulator of hydrogen sulfide, especially in the brain, utilizing cysteine instead of serine to catalyze the formation of hydrogen sulfide. Hydrogen sulfide is a gastratransmitter with signaling and cytoprotective effects such as acting as a neuromodulator in the brain to protect neurons against hypoxic injury
<b>Abbreviation</b>	Recombinant Mouse Cbs protein
<b>Storage</b>	The shelf life is related to many factors, storage state, buffer ingredients, storage temperature and the stability of the protein itself. Generally, the shelf life of liquid form is 6 months at -20°C/-80°C. The shelf life of lyophilized form is 12 months at -20°C/-80°C.
<b>Uniprot No.</b>	Q91WT9
<b>Alias</b>	Beta-thionase Serine sulfhydrase
<b>Product Type</b>	Recombinant Protein
<b>Immunogen Species</b>	Mus musculus (Mouse)
<b>Purity</b>	Greater than 90% as determined by SDS-PAGE.
<b>Sequence</b>	PSGTSQCEDGSAGGFQHLDMHSEKRQLEKGPSGDKDRVWIRPDTPSRCTW QLGRAMADSPHYHTVLTKSPKILPDILRKIGNTMPVRINKISKNAGLKCELLAKC EFFNAGGSVKDRISLRMIEDAERAGNLKPGDTIIEPTSGNTGIGLALAAVKG RCIIVMPEKMSMEKVDVLRALGAEIVRTPTNARFDSPESHVGVAVRLKNEIPN SHILDQYRNASNPLAHYDDTAEEILQQCDGKLDMLVASAGTGGTITGIARKLKE KCPGCKIIGVDPEGSILAEPEELNQTEQTAYEVEGIGYDFIPTVLDRAVVDKWF KSNDEDSFAFARMLIAQEGLLCGGSSGSAMAVAVKAARELQEGQRCVVILPD SVRNYMSKFLSDKWMLQKGFMEELSVKRPWWRLRVQELSLSAPLTVLPT VTCEDTIALREKGFQAPVNVESGAILGMVTLGNMLSSLLAGKVRPSDEVCKV LYKQFKPIHLTDLGTLSHILEMDHFALVVHEQIQSRDQAWSGVVGPTDCSN GMSSKQQMVFGVVTAIDLLNFVAAREQTQT
<b>Research Area</b>	Others
<b>Source</b>	E.coli
<b>Target Names</b>	Cbs
<b>Expression Region</b>	2-561aa
<b>Notes</b>	Repeated freezing and thawing is not recommended. Store working aliquots at 4°C for up to one week.
<b>Tag Info</b>	N-terminal 6xHis-SUMO-tagged
<b>Mol. Weight</b>	77.4kDa
<b>Protein Length</b>	Full Length of Mature Protein



## Image



(Tris-Glycine gel) Discontinuous SDS-PAGE (reduced) with 5% enrichment gel and 15% separation gel.

## Reconstitution

We recommend that this vial be briefly centrifuged prior to opening to bring the contents to the bottom. Please reconstitute protein in deionized sterile water to a concentration of 0.1-1.0 mg/mL. We recommend to add 5-50% of glycerol (final concentration) and aliquot for long-term storage at -20°C/-80°C. Our default final concentration of glycerol is 50%. Customers could use it as reference.

## Shelf Life

The shelf life is related to many factors, storage state, buffer ingredients, storage temperature and the stability of the protein itself.

Generally, the shelf life of liquid form is 6 months at -20°C/-80°C. The shelf life of lyophilized form is 12 months at -20°C/-80°C.