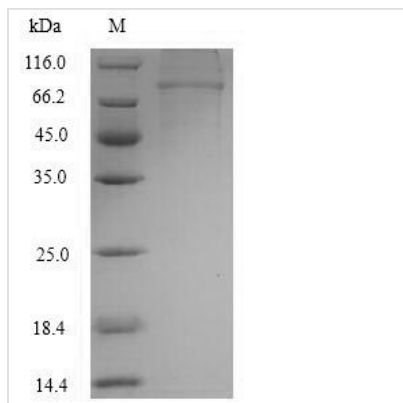




Recombinant Human Clathrin interactor 1 (CLINT1)

Product Code	CSB-EP005552HUa2
Relevance	Binds to membranes enriched in phosphatidylinositol 4,5-bisphosphate (PtdIns(4,5)P ₂). May have a role in transport via clathrin-coated vesicles from the trans-Golgi network to endosomes. Stimulates clathrin assembly.
Storage	The shelf life is related to many factors, storage state, buffer ingredients, storage temperature and the stability of the protein itself. Generally, the shelf life of liquid form is 6 months at -20°C/-80°C. The shelf life of lyophilized form is 12 months at -20°C/-80°C.
Uniprot No.	Q14677
Product Type	Recombinant Proteins
Immunogen Species	Homo sapiens (Human)
Purity	Greater than 90% as determined by SDS-PAGE.
Sequence	MLNMWQVRELVDKATNVVMNYSEIESKVVREATNDPWPVSGQLMGEIAKATF MYEQFPELMNMLWSRMLKDNKKNWRRVYKSLLLAYLIRNGSERVVTSAREH IYDLRSLENYHFVDEHGKDQGINIRQVKVELVEFAQDDRLREERKKAKKNKD KYVGVSSDSVGGFRYSERYDPEPKSKWDEEWDKNKSAFPFSDKLGELSDKIG STIDDTISKFRKDRDREDSPERCSDSDEEKARRGRSPKGEFKDEEETVTTKHI HITQATETTTTRHKRTANPSKTIDLGAAAHYTGDKASPDQNASTHTPQSSVKT SVPSSKSSGDLVDLFDGTSQSTGGSADLFGGFADFGSAAASGSFSPSQTATS GNGDFGDWSAFNQAPSGPVASSGEFFGSASQPAVELVSGSQSALGPPPAAS NSSDLFDLMGSSQATMTSSQSMNFSMMSTNTVGLGLPMSRSQNTDMVQKSV SKTLPSTWSDPSVNIISLDNLLPGMQPSKPPQPSLNTMIQQQNMQQPMNVMT QSFQAVNLSSPSNMLPVRPQTNALIGGPMMPMSPNVMTGTMGMAPLGNTPM MNQSMGMNMNIGMSAAGMGLTGTMGMGMPNIAMTSGTVQPKQDAFANFA NFSK
Research Area	Signal Transduction
Source	E.coli
Target Names	CLINT1
Expression Region	1-625aa
Notes	Repeated freezing and thawing is not recommended. Store working aliquots at 4°C for up to one week.
Tag Info	N-terminal 6xHis-SUMO-tagged
Mol. Weight	84.3kDa
Protein Length	Full Length
Image	



(Tris-Glycine gel) Discontinuous SDS-PAGE (reduced) with 5% enrichment gel and 15% separation gel.

Shelf Life

The shelf life is related to many factors, storage state, buffer ingredients, storage temperature and the stability of the protein itself.

Generally, the shelf life of liquid form is 6 months at -20°C/-80°C. The shelf life of lyophilized form is 12 months at -20°C/-80°C.