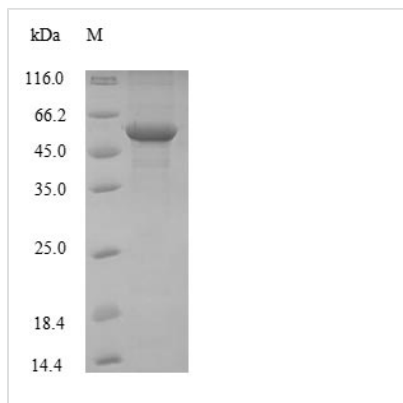


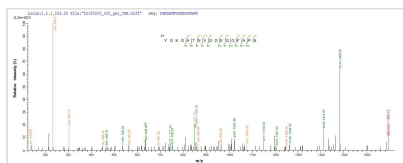


Recombinant Mouse Alpha-enolase (Eno1), partial

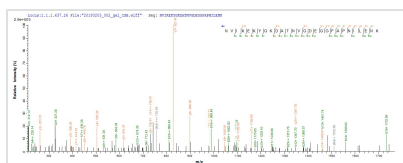
Product Code	CSB-EP007670MOb0
Relevance	Multifunctional enzyme that, as well as its role in glycolysis, plays a part in various processes such as growth control, hypoxia tolerance and allergic responses. May also function in the intravascular and pericellular fibrinolytic system due to its ability to serve as a receptor and activator of plasminogen on the cell surface of several cell-types such as leukocytes and neurons. Stimulates immunoglobulin production
Abbreviation	Recombinant Mouse Eno1 protein, partial
Storage	The shelf life is related to many factors, storage state, buffer ingredients, storage temperature and the stability of the protein itself. Generally, the shelf life of liquid form is 6 months at -20°C/-80°C. The shelf life of lyophilized form is 12 months at -20°C/-80°C.
Uniprot No.	P17182
Alias	2-phospho-D-glycerate hydro-lyase Enolase 1 Non-neural enolase
Product Type	Recombinant Protein
Immunogen Species	Mus musculus (Mouse)
Purity	Greater than 90% as determined by SDS-PAGE.
Sequence	SILRIHAREIFDSRGNPTVEVDLYTAKGLFRAAVPSGASTGIYEALELRDNDKTR FMGKGVSQAVEHINKTIAPALVSKKVNVEQEKIDKLMIEDGTENKSKFGANA ILGVSLAVCKAGAVEKGVPLYRHIADLAGNPEVILPVPFNVINGGSHAGNKLA MQEFMILPVGASSFREAMRIGAEVYHNLKNVIKEKYGKDATNVGDEGGFAPNI LENKEALELLKTAIAKAGYTDQVVIGMDVAASEFYRSGKYDLDFKSPDDPSRYI TPDQLADLYKSFVQNYPVVSIEDPFDQDDWGAWQKFTASAGIQVVGDDLTVT NPKRIAKAASEKSCNCLLLKVNQIGSVTESLQACKLAQSNGWGMVSHRSGE TEDTFIADLVVGLCTGQIKTGAPCRSERLAKYNQILRIEEELGSKAKFAGRSFRN PLA
Research Area	Signal Transduction
Source	E.coli
Target Names	Eno1
Expression Region	2-433aa
Notes	Repeated freezing and thawing is not recommended. Store working aliquots at 4°C for up to one week.
Tag Info	N-terminal 10xHis-tagged
Mol. Weight	50.4kDa
Protein Length	Partial
Image	



(Tris-Glycine gel) Discontinuous SDS-PAGE (reduced) with 5% enrichment gel and 15% separation gel.



Based on the SEQUEST from database of E.coli host and target protein, the LC-MS/MS Analysis result of CSB-EP007670MOB0 could indicate that this peptide derived from E.coli-expressed Mus musculus (Mouse) Eno1.



Based on the SEQUEST from database of E.coli host and target protein, the LC-MS/MS Analysis result of CSB-EP007670MOB0 could indicate that this peptide derived from E.coli-expressed Mus musculus (Mouse) Eno1.

Reconstitution

We recommend that this vial be briefly centrifuged prior to opening to bring the contents to the bottom. Please reconstitute protein in deionized sterile water to a concentration of 0.1-1.0 mg/mL. We recommend to add 5-50% of glycerol (final concentration) and aliquot for long-term storage at -20°C/-80°C. Our default final concentration of glycerol is 50%. Customers could use it as reference.

Shelf Life

The shelf life is related to many factors, storage state, buffer ingredients, storage temperature and the stability of the protein itself. Generally, the shelf life of liquid form is 6 months at -20°C/-80°C. The shelf life of lyophilized form is 12 months at -20°C/-80°C.