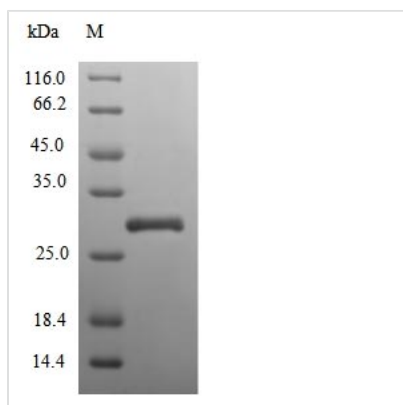




Recombinant Human Extracellular superoxide dismutase [Cu-Zn] (SOD3)

Product Code	CSB-EP022399HUa0
Relevance	Protect the extracellular space from toxic effect of reactive oxygen intermediates by converting superoxide radicals into hydrogen peroxide and oxygen.
Abbreviation	Recombinant Human SOD3 protein
Storage	The shelf life is related to many factors, storage state, buffer ingredients, storage temperature and the stability of the protein itself. Generally, the shelf life of liquid form is 6 months at -20°C/-80°C. The shelf life of lyophilized form is 12 months at -20°C/-80°C.
Uniprot No.	P08294
Product Type	Recombinant Protein
Immunogen Species	Homo sapiens (Human)
Purity	≥ 90% as determined by SDS-PAGE.
Sequence	WTGEDSAEPNSDSA EWIRDMYAKVTEIWQEVMQRRDDDGALHAACQVQPSA TLDAAQPRVTGVVLFRLAPRAKLDAFFALEGFPTPENSSSRAIHVHQFGDLS QGCESTGPHYNPLAVPHPQHPGDFGNFAVRDGS LWRYRAGLAASLAGPHSI VGRAVVVHAGEDDLGRGGNQASVENGNAGRRLACCVVGVCGPGLWERQAR EHSERKKRRRESECKAA
Research Area	Cell Biology
Source	E.coli
Target Names	SOD3
Expression Region	19-240aa
Notes	Repeated freezing and thawing is not recommended. Store working aliquots at 4°C for up to one week.
Tag Info	N-terminal 6xHis-tagged
Mol. Weight	28.1kDa
Protein Length	Full Length of Mature Protein

Image



(Tris-Glycine gel) Discontinuous SDS-PAGE (reduced) with 5% enrichment gel and 15% separation gel.

Reconstitution

We recommend that this vial be briefly centrifuged prior to opening to bring the contents to the bottom. Please reconstitute protein in deionized sterile water to a concentration of 0.1-1.0 mg/mL. We recommend to add 5-50% of glycerol (final concentration) and aliquot for long-term storage at -20°C/-80°C. Our default final concentration of glycerol is 50%. Customers could use it as reference.

Shelf Life

The shelf life is related to many factors, storage state, buffer ingredients, storage temperature and the stability of the protein itself. Generally, the shelf life of liquid form is 6 months at -20°C/-80°C. The shelf life of lyophilized form is 12 months at -20°C/-80°C.