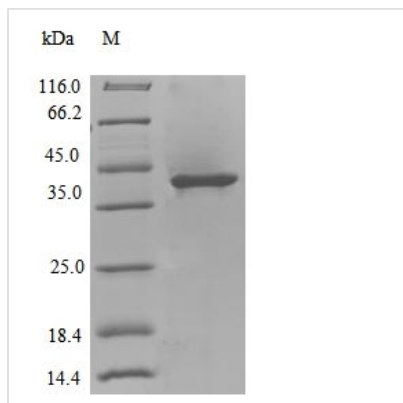




Recombinant *Colwellia psychrerythraea* DNA polymerase IV (dinB)

Product Code	CSB-EP676401CBABe1
Relevance	Poorly processive, error-prone DNA polymerase involved in untargeted mutagenesis. Copies undamaged DNA at stalled replication forks, which arise in vivo from mismatched or misaligned primer ends. These misaligned primers can be extended by PolIV. Exhibits no 3'-5' exonuclease (proofreading) activity. May be involved in translesional synthesis, in conjunction with the beta clamp from PolIII.
Abbreviation	Recombinant <i>Colwellia psychrerythraea</i> dinB protein
Storage	The shelf life is related to many factors, storage state, buffer ingredients, storage temperature and the stability of the protein itself. Generally, the shelf life of liquid form is 6 months at -20°C/-80°C. The shelf life of lyophilized form is 12 months at -20°C/-80°C.
Uniprot No.	Q487H6
Product Type	Recombinant Protein
Immunogen Species	<i>Colwellia psychrerythraea</i> (strain 34H / ATCC BAA-681) (<i>Vibrio psychroerythus</i>)
Purity	≥ 90% as determined by SDS-PAGE.
Sequence	MGNQKKIIHIDMDCFYAAIEMRDFPEYQNIPLAVGGDGPRSVLCTSNYQARQF GVRSAMPAIKAKQLCPHLKIVHGRMDVYKETSKNIREIFSRYTDLIEPLSLDEAY LDVTDATMCQGSATLIAERIRADIFNELNLTASAGIAPNKFLAKIASDENKPNGQ CVITPDKVANFVEQLSLKKIPGIGPKTFEKLNRHGYVTCADVRQSNIRALQNIVG KFANSLYLKSHGVDNRDLEVSRQRKSLAIETT LAHDISTQDECKLVIDSLYQKLL TRLAPHSNREIIRQGVKLFKFTDFNQTTVETQSNECQQUALFISLLSKAYSRSNKR GVRLVGLTLGFADSPGESQQLSLSL
Research Area	others
Source	E.coli
Target Names	dinB
Expression Region	1-352aa
Notes	Repeated freezing and thawing is not recommended. Store working aliquots at 4°C for up to one week.
Tag Info	NO-Tagged
Mol. Weight	39.3kDa
Protein Length	Full Length
Image	



(Tris-Glycine gel) Discontinuous SDS-PAGE (reduced) with 5% enrichment gel and 15% separation gel.

Reconstitution

We recommend that this vial be briefly centrifuged prior to opening to bring the contents to the bottom. Please reconstitute protein in deionized sterile water to a concentration of 0.1-1.0 mg/mL. We recommend to add 5-50% of glycerol (final concentration) and aliquot for long-term storage at -20°C/-80°C. Our default final concentration of glycerol is 50%. Customers could use it as reference.

Shelf Life

The shelf life is related to many factors, storage state, buffer ingredients, storage temperature and the stability of the protein itself. Generally, the shelf life of liquid form is 6 months at -20°C/-80°C. The shelf life of lyophilized form is 12 months at -20°C/-80°C.