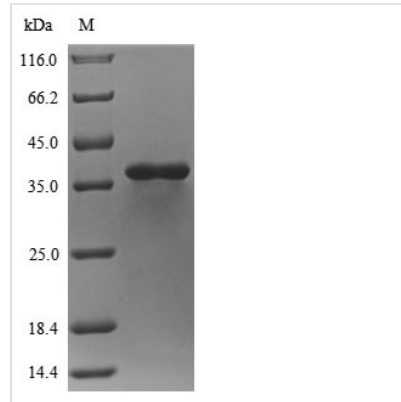




Recombinant Staphylococcus aureus Phospholipase C (h1b)

Product Code	CSB-YP357824FKZb0
Relevance	Bacterial hemolysins are exotoxins that attack blood cell membranes and cause cell rupture. Beta-hemolysin is a phospholipase C with specific activity toward sphingomyelins. Has a high specificity for sphingomyelin, hydrolyzes lysophosphatidylcholine at a much lower rate, but has no activity towards phosphatidylcholine, phosphatidylethanolamine, or phosphatidylserine
Abbreviation	Recombinant Staphylococcus aureus h1b protein
Storage	The shelf life is related to many factors, storage state, buffer ingredients, storage temperature and the stability of the protein itself. Generally, the shelf life of liquid form is 6 months at -20°C/-80°C. The shelf life of lyophilized form is 12 months at -20°C/-80°C.
Uniprot No.	P09978
Product Type	Recombinant Protein
Immunogen Species	Staphylococcus aureus
Purity	≥ 90% as determined by SDS-PAGE.
Sequence	ESKKDDTDLKLVSHNVYMLSTVLYPNWGQYKRADLIGQSSYIKNNDVVIFNEA FDNGASDKLLSNVKKEYPYQTPVLGRSQSGWDKTEGSYSSTVAEDGGVAIVS KYPIKEKIQHVFKSGCGFDNDSNKGfVYTKIEKNGKNVHVIGTHTQSEDSRCG AGHDRKIRAEQMKEISDFVKKKNIPKDETVYIGGDLNVNKGTPFEFKDMLKLNLV NDVLYAGHNSTWDPQSNSIAKYNYPNGKPEHLDYIFTDKDHKQPKQLVNEVV TEKPKPWDVYAFPYYYVYNDVDFSDHYPIKAYSK
Research Area	others
Source	Yeast
Target Names	h1b
Protein Names	Beta-hemolysin Beta-toxin Sphingomyelinase
Expression Region	35-330aa
Notes	Repeated freezing and thawing is not recommended. Store working aliquots at 4°C for up to one week.
Tag Info	N-terminal 10xHis-tagged
Mol. Weight	36.2kDa
Protein Length	Full Length of Mature Protein
Image	



(Tris-Glycine gel) Discontinuous SDS-PAGE (reduced) with 5% enrichment gel and 15% separation gel.

Reconstitution

We recommend that this vial be briefly centrifuged prior to opening to bring the contents to the bottom. Please reconstitute protein in deionized sterile water to a concentration of 0.1-1.0 mg/mL. We recommend to add 5-50% of glycerol (final concentration) and aliquot for long-term storage at -20°C/-80°C. Our default final concentration of glycerol is 50%. Customers could use it as reference.

Shelf Life

The shelf life is related to many factors, storage state, buffer ingredients, storage temperature and the stability of the protein itself. Generally, the shelf life of liquid form is 6 months at -20°C/-80°C. The shelf life of lyophilized form is 12 months at -20°C/-80°C.