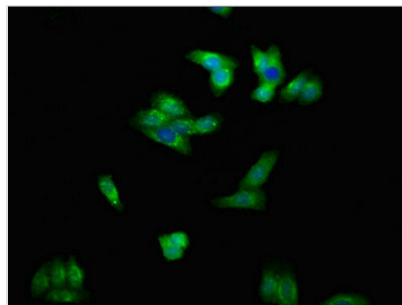




# ENPP1 Antibody

|                            |  |
|----------------------------|--|
| <b>Product Code</b>        | CSB-PA007679LA01HU   |
| <b>Storage</b>             | Upon receipt, store at -20°C or -80°C. Avoid repeated freeze.  |
| <b>Uniprot No.</b>         | P22413   |
| <b>Immunogen</b>           | Recombinant Human Ectonucleotide pyrophosphatase/phosphodiesterase family member 1 protein (1-75AA)  |
| <b>Raised In</b>           | Rabbit   |
| <b>Species Reactivity</b>  | Human  |
| <b>Tested Applications</b> | ELISA, IF; Recommended dilution: IF:1:50-1:200   |
| <b>Form</b>                | Liquid   |
| <b>Conjugate</b>           | Non-conjugated   |
| <b>Storage Buffer</b>      | Preservative: 0.03% Proclin 300<br>Constituents: 50% Glycerol, 0.01M PBS, pH 7.4   |
| <b>Purification Method</b> | >95%, Protein G purified   |
| <b>Isotype</b>             | IgG  |
| <b>Clonality</b>           | Polyclonal   |
| <b>Alias</b>               | Ectonucleotide pyrophosphatase/phosphodiesterase family member 1 (E-NPP 1) (Membrane component chromosome 6 surface marker 1) (Phosphodiesterase I/nucleotide pyrophosphatase 1) (Plasma-cell membrane glycoprotein PC-1) [Includes: Alkaline phosphodiesterase I (EC 3.1.4.1); Nucleotide pyrophosphatase (NPPase) (EC 3.6.1.9) (Nucleotide diphosphatase)], ENPP1, M6S1 NPPS PC1 PDNP1 |
| <b>Immunogen Species</b>   | Homo sapiens (Human)   |
| <b>Research Area</b>       | Signal Transduction  |
| <b>Target Names</b>        | ENPP1  |

## Image



Immunofluorescent analysis of HepG2 cells using CSB-PA007679LA01HU at dilution of 1:100 and Alexa Fluor 488-conjugated AffiniPure Goat Anti-Rabbit IgG(H+L)