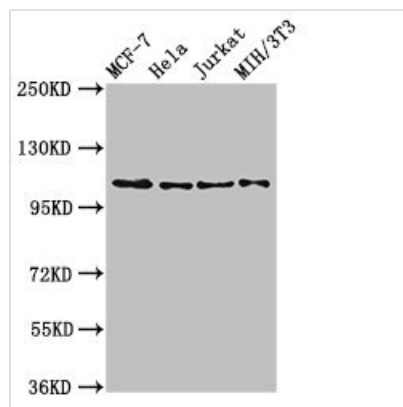




EPHB3 Antibody

Product Code	CSB-PA007731LA01HU
Storage	Upon receipt, store at -20°C or -80°C. Avoid repeated freeze.
Uniprot No.	P54753
Immunogen	Recombinant Human Ephrin type-B receptor 3 protein (261-390AA)
Raised In	Rabbit
Species Reactivity	Human, Mouse, Rat
Tested Applications	ELISA, WB, IF; Recommended dilution: WB:1:500-1:5000, IF:1:50-1:200
Form	Liquid
Conjugate	Non-conjugated
Storage Buffer	Preservative: 0.03% Proclin 300 Constituents: 50% Glycerol, 0.01M PBS, pH 7.4
Purification Method	>95%, Protein G purified
Isotype	IgG
Clonality	Polyclonal
Alias	Ephrin type-B receptor 3 (EC 2.7.10.1) (EPH-like tyrosine kinase 2) (EPH-like kinase 2) (Embryonic kinase 2) (EK2) (hEK2) (Tyrosine-protein kinase TYRO6), EPHB3, ETK2 HEK2 TYRO6
Immunogen Species	Homo sapiens (Human)
Research Area	Neuroscience
Target Names	EPHB3

Image



Western Blot

Positive WB detected in: MCF-7 whole cell lysate, HeLa whole cell lysate, Jurkat whole cell lysate, NIH/3T3 whole cell lysate

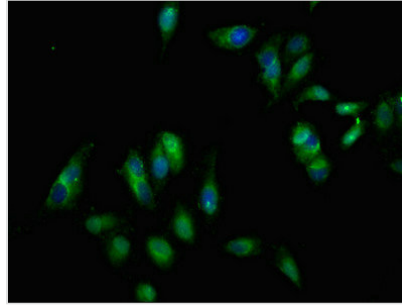
All lanes: EPHB3 antibody at 2.7µg/ml

Secondary

Goat polyclonal to rabbit IgG at 1/50000 dilution

Predicted band size: 111 kDa

Observed band size: 111 kDa



Immunofluorescent analysis of HeLa cells using CSB-PA007731LA01HU at dilution of 1:100 and Alexa Fluor 488-conjugated AffiniPure Goat Anti-Rabbit IgG(H+L)

Usage

For Research Use Only. Not for use in diagnostic or therapeutic procedures.