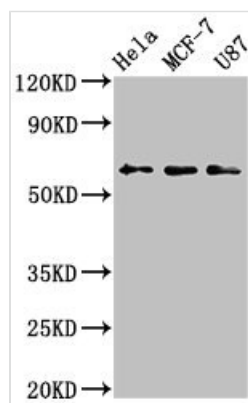




KY Antibody

Product Code	CSB-PA012702LA01HU
Storage	Upon receipt, store at -20°C or -80°C. Avoid repeated freeze.
Uniprot No.	Q8NBH2
Immunogen	Recombinant Human Kyphoscoliosis peptidase protein (23-170AA)
Raised In	Rabbit
Species Reactivity	Human
Tested Applications	ELISA, WB, IHC, IF; Recommended dilution: WB:1:500-1:5000, IHC:1:20-1:200, IF:1:50-1:200
Form	Liquid
Conjugate	Non-conjugated
Storage Buffer	Preservative: 0.03% Proclin 300 Constituents: 50% Glycerol, 0.01M PBS, pH 7.4
Purification Method	>95%, Protein G purified
Isotype	IgG
Clonality	Polyclonal
Alias	Kyphoscoliosis peptidase (EC 3.4.-.-), KY
Immunogen Species	Homo sapiens (Human)
Research Area	Others
Target Names	KY

Image



Western Blot

Positive WB detected in: HeLa whole cell lysate, MCF-7 whole cell lysate, U87 whole cell lysate

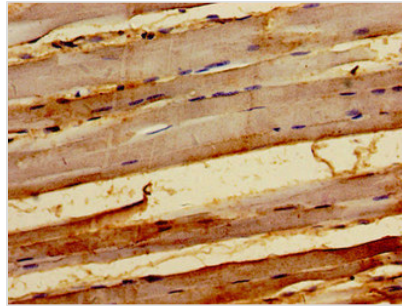
All lanes: KY antibody at 3.2µg/ml

Secondary

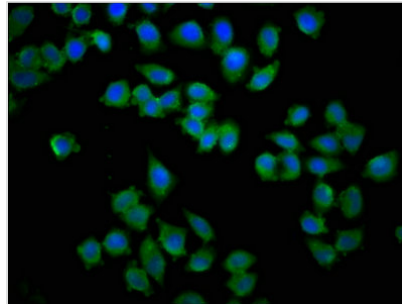
Goat polyclonal to rabbit IgG at 1/50000 dilution

Predicted band size: 64, 42, 73, 76 kDa

Observed band size: 64 kDa



Immunohistochemistry of paraffin-embedded human skeletal muscle tissue using CSB-PA012702LA01HU at dilution of 1:100



Immunofluorescence staining of HeLa cells with CSB-PA012702LA01HU at 1:133, counter-stained with DAPI. The cells were fixed in 4% formaldehyde, permeabilized using 0.2% Triton X-100 and blocked in 10% normal Goat Serum. The cells were then incubated with the antibody overnight at 4°C. The secondary antibody was Alexa Fluor 488-conjugated AffiniPure Goat Anti-Rabbit IgG(H+L).