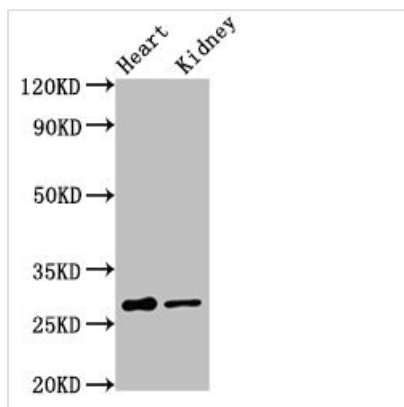




# OLIG1 Antibody

|                            |  |
|----------------------------|--|
| <b>Product Code</b>        | CSB-PA016328LA01HU   |
| <b>Storage</b>             | Upon receipt, store at -20°C or -80°C. Avoid repeated freeze.  |
| <b>Uniprot No.</b>         | Q8TAK6   |
| <b>Immunogen</b>           | Recombinant Human Oligodendrocyte transcription factor 1 protein (17-105AA)  |
| <b>Raised In</b>           | Rabbit   |
| <b>Species Reactivity</b>  | Human, Rat   |
| <b>Tested Applications</b> | ELISA, WB; Recommended dilution: WB:1:500-1:5000   |
| <b>Form</b>                | Liquid   |
| <b>Conjugate</b>           | Non-conjugated   |
| <b>Storage Buffer</b>      | Preservative: 0.03% Proclin 300<br>Constituents: 50% Glycerol, 0.01M PBS, pH 7.4   |
| <b>Purification Method</b> | >95%, Protein G purified   |
| <b>Isotype</b>             | IgG  |
| <b>Clonality</b>           | Polyclonal   |
| <b>Alias</b>               | Oligodendrocyte transcription factor 1 (Oligo1) (Class B basic helix-loop-helix protein 6) (bHLHb6) (Class E basic helix-loop-helix protein 21) (bHLHe21), OLIG1, BHLHB6 BHLHE21 |
| <b>Immunogen Species</b>   | Homo sapiens (Human)   |
| <b>Research Area</b>       | Neuroscience   |
| <b>Target Names</b>        | OLIG1  |

## Image



### Western Blot

Positive WB detected in: Rat heart tissue, Rat kidney tissue

All lanes: OLIG1 antibody at 3.2µg/ml

Secondary

Goat polyclonal to rabbit IgG at 1/50000 dilution

Predicted band size: 28 kDa

Observed band size: 28 kDa

## Usage

For Research Use Only. Not for use in diagnostic or therapeutic procedures.