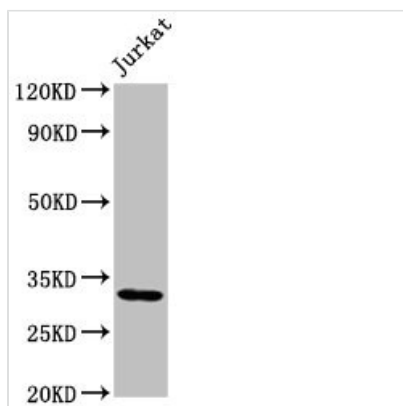




PSMG1 Antibody

Product Code	CSB-PA018921LA01HU
Storage	Upon receipt, store at -20°C or -80°C. Avoid repeated freeze.
Uniprot No.	O95456
Immunogen	Recombinant Human Proteasome assembly chaperone 1 protein (91-200AA)
Raised In	Rabbit
Species Reactivity	Human
Tested Applications	ELISA, WB, IHC, IF; Recommended dilution: WB:1:500-1:5000, IHC:1:20-1:200, IF:1:50-1:200
Form	Liquid
Conjugate	Non-conjugated
Storage Buffer	Preservative: 0.03% Proclin 300 Constituents: 50% Glycerol, 0.01M PBS, pH 7.4
Purification Method	>95%, Protein G purified
Isotype	IgG
Clonality	Polyclonal
Alias	Proteasome assembly chaperone 1 (PAC-1) (Chromosome 21 leucine-rich protein) (C21-LRP) (Down syndrome critical region protein 2), PSMG1, C21LRP, DSCR2, PAC1
Immunogen Species	Homo sapiens (Human)
Research Area	Cell Biology
Target Names	PSMG1

Image



Western Blot

Positive WB detected in: Jurkat whole cell lysate

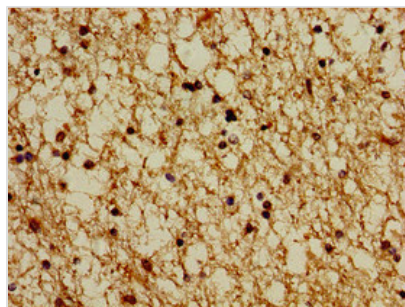
All lanes: PSMG1 antibody at 2µg/ml

Secondary

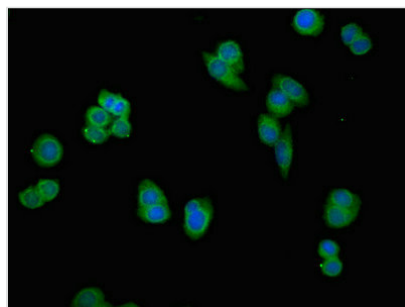
Goat polyclonal to rabbit IgG at 1/50000 dilution

Predicted band size: 33, 31 kDa

Observed band size: 33 kDa



Immunohistochemistry of paraffin-embedded human brain tissue using CSB-PA018921LA01HU at dilution of 1:100



Immunofluorescent analysis of PC-3 cells using CSB-PA018921LA01HU at dilution of 1:100 and Alexa Fluor 488-conjugated AffiniPure Goat Anti-Rabbit IgG(H+L)

Usage

For Research Use Only. Not for use in diagnostic or therapeutic procedures.