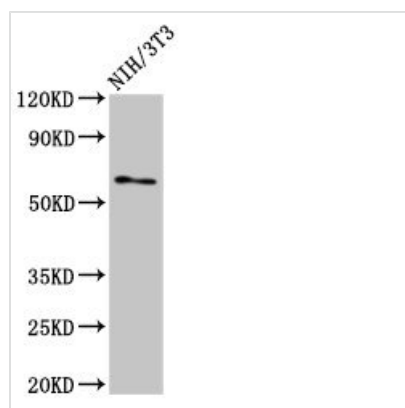




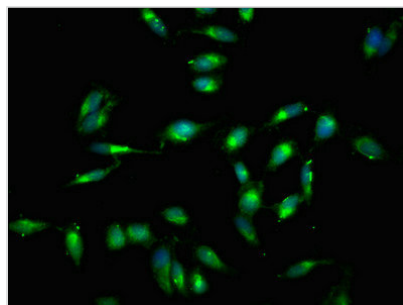
RELB Antibody

Product Code	CSB-PA019554LA01HU
Storage	Upon receipt, store at -20°C or -80°C. Avoid repeated freeze.
Uniprot No.	Q01201
Immunogen	Recombinant Human Transcription factor RelB protein (400-579AA)
Raised In	Rabbit
Species Reactivity	Human, Mouse
Tested Applications	ELISA, WB, IF; Recommended dilution: WB:1:2000-1:10000, IF:1:50-1:500
Form	Liquid
Conjugate	Non-conjugated
Storage Buffer	Preservative: 0.03% Proclin 300 Constituents: 50% Glycerol, 0.01M PBS, pH 7.4
Purification Method	>95%, Protein G purified
Isotype	IgG
Clonality	Polyclonal
Alias	Transcription factor RelB (I-Rel), RELB
Immunogen Species	Homo sapiens (Human)
Research Area	Cell Biology
Target Names	RELB

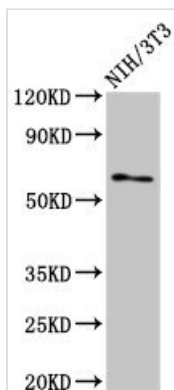
Image



Western Blot
Positive WB detected in: NIH/3T3 whole cell lysate
All lanes: RELB antibody at 3µg/ml
Secondary
Goat polyclonal to rabbit IgG at 1/50000 dilution
Predicted band size: 63, 62, 15 kDa
Observed band size: 63 kDa



Immunofluorescent analysis of HeLa cells using CSB-PA019554LA01HU at dilution of 1:100 and Alexa Fluor 488-conjugated AffiniPure Goat Anti-Rabbit IgG(H+L)



Western Blot

Positive WB detected in: NIH/3T3 whole cell lysate

All lanes: RELB antibody at 3μg/ml

Secondary

Goat polyclonal to rabbit IgG at 1/50000 dilution

Predicted band size: 63 kDa

Observed band size: 63 kDa