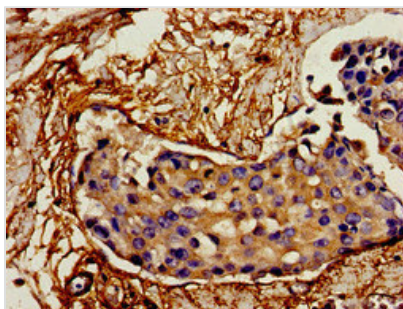




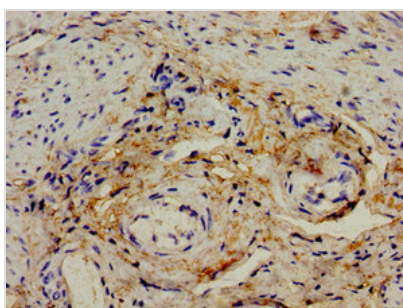
# IL12A Antibody

<b>Product Code</b>	CSB-PA16819A0Rb
<b>Storage</b>	Upon receipt, store at -20°C or -80°C. Avoid repeated freeze.
<b>Uniprot No.</b>	P29459
<b>Immunogen</b>	Recombinant Human Interleukin-12 subunit alpha protein (23-219AA)
<b>Raised In</b>	Rabbit
<b>Species Reactivity</b>	Human
<b>Tested Applications</b>	ELISA, IHC; Recommended dilution: IHC:1:20-1:200
<b>Form</b>	Liquid
<b>Conjugate</b>	Non-conjugated
<b>Storage Buffer</b>	Preservative: 0.03% Proclin 300 Constituents: 50% Glycerol, 0.01M PBS, pH 7.4
<b>Purification Method</b>	>95%, Protein G purified
<b>Isotype</b>	IgG
<b>Clonality</b>	Polyclonal
<b>Alias</b>	Interleukin-12 subunit alpha (IL-12A) (Cytotoxic lymphocyte maturation factor 35 kDa subunit) (CLMF p35) (IL-12 subunit p35) (NK cell stimulatory factor chain 1) (NKSF1), IL12A, NKSF1
<b>Immunogen Species</b>	Homo sapiens (Human)
<b>Research Area</b>	Immunology
<b>Target Names</b>	IL12A

## Image



Immunohistochemistry of paraffin-embedded human breast cancer using CSB-PA16819A0Rb at dilution of 1:100



Immunohistochemistry of paraffin-embedded human endometrial cancer using CSB-PA16819A0Rb at dilution of 1:100



---

**Usage**

For Research Use Only. Not for use in diagnostic or therapeutic procedures.