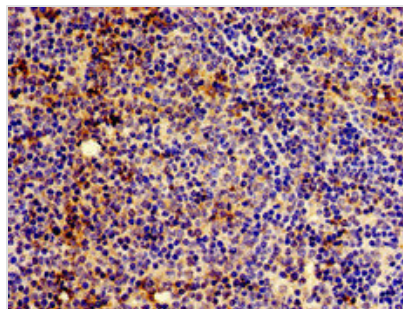




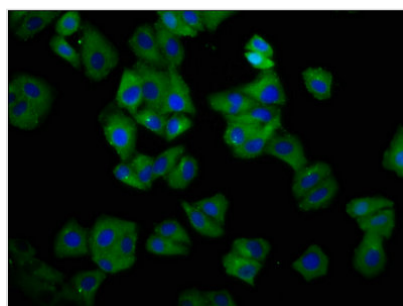
HLA-C Antibody

Product Code	CSB-PA356221LA01HU
Storage	Upon receipt, store at -20°C or -80°C. Avoid repeated freeze.
Uniprot No.	P04222
Immunogen	Recombinant Human HLA class I histocompatibility antigen, Cw-3 alpha chain protein (200-306AA)
Raised In	Rabbit
Species Reactivity	Human
Tested Applications	ELISA, IHC, IF; Recommended dilution: IHC:1:20-1:200, IF:1:50-1:200
Form	Liquid
Conjugate	Non-conjugated
Storage Buffer	Preservative: 0.03% Proclin 300 Constituents: 50% Glycerol, 0.01M PBS, pH 7.4
Purification Method	>95%, Protein G purified
Isotype	IgG
Clonality	Polyclonal
Alias	HLA class I histocompatibility antigen, Cw-3 alpha chain (MHC class I antigen Cw*3), HLA-C, HLAC
Immunogen Species	Homo sapiens (Human)
Research Area	Immunology
Target Names	HLA-C

Image



Immunohistochemistry of paraffin-embedded human lymph node tissue using CSB-PA356221LA01HU at dilution of 1:100



Immunofluorescence staining of HepG2 cells with CSB-PA356221LA01HU at 1:66, counter-stained with DAPI. The cells were fixed in 4% formaldehyde, permeabilized using 0.2% Triton X-100 and blocked in 10% normal Goat Serum. The cells were then incubated with the antibody overnight at 4°C. The secondary antibody was Alexa Fluor 488-conjugated AffiniPure Goat Anti-Rabbit IgG(H+L).

