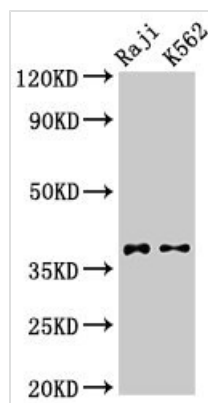




DMC1 Antibody

Product Code	CSB-PA617920LA01HU
Storage	Upon receipt, store at -20°C or -80°C. Avoid repeated freeze.
Uniprot No.	Q14565
Immunogen	Recombinant Human Meiotic recombination protein DMC1/LIM15 homolog protein (5-153AA)
Raised In	Rabbit
Species Reactivity	Human
Tested Applications	ELISA, WB, IHC, IF; Recommended dilution: WB:1:500-1:5000, IHC:1:20-1:200, IF:1:50-1:200
Form	Liquid
Conjugate	Non-conjugated
Storage Buffer	Preservative: 0.03% Proclin 300 Constituents: 50% Glycerol, 0.01M PBS, pH 7.4
Purification Method	>95%, Protein G purified
Isotype	IgG
Clonality	Polyclonal
Alias	Meiotic recombination protein DMC1/LIM15 homolog, DMC1, DMC1H LIM15
Immunogen Species	Homo sapiens (Human)
Research Area	Epigenetics and Nuclear Signaling
Target Names	DMC1

Image



Western Blot

Positive WB detected in: Raji whole cell lysate,

K562 whole cell lysate

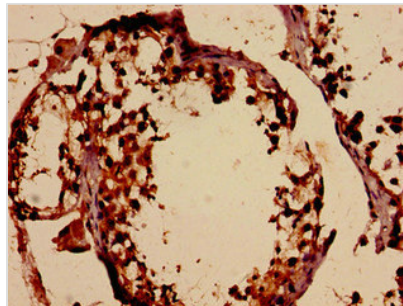
All lanes: DMC1 antibody at 3.2µg/ml

Secondary

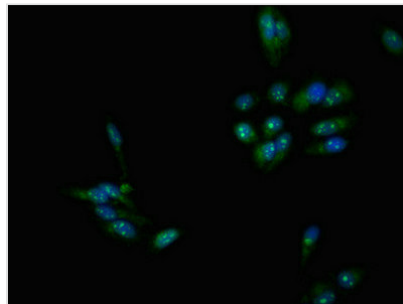
Goat polyclonal to rabbit IgG at 1/50000 dilution

Predicted band size: 38, 32 kDa

Observed band size: 38 kDa



Immunohistochemistry analysis of human testis tissue using CSB-PA617920LA01HU at dilution of 1:100



Immunofluorescent analysis of HeLa cells using CSB-PA617920LA01HU at dilution of 1:100 and Alexa Fluor 488-conjugated AffiniPure Goat Anti-Rabbit IgG(H+L)