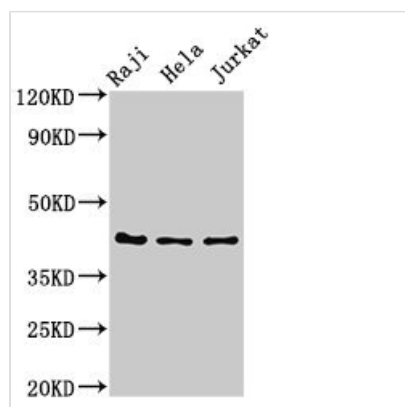




PAG 1 Antibody

Product Code	CSB-PA644917LA01BO
Storage	Upon receipt, store at -20°C or -80°C. Avoid repeated freeze.
Uniprot No.	Q29432
Immunogen	Recombinant Bovine Pregnancy-associated glycoprotein 1 protein (54-380AA)
Raised In	Rabbit
Species Reactivity	Bovine, Human, Rat
Tested Applications	ELISA, WB; Recommended dilution: WB:1:500-1:5000
Form	Liquid
Conjugate	Non-conjugated
Storage Buffer	Preservative: 0.03% Proclin 300 Constituents: 50% Glycerol, 0.01M PBS, pH 7.4
Purification Method	>95%, Protein G purified
Isotype	IgG
Clonality	Polyclonal
Alias	Pregnancy-associated glycoprotein 1 (PAG 1) (EC 3.4.23.-) (Pregnancy-specific protein B) (PSP-B)
Immunogen Species	Bos taurus (Bovine)
Research Area	Others

Image



Western Blot

Positive WB detected in: Raji whole cell lysate, HeLa whole cell lysate, Jurkat whole cell lysate
All lanes: Pregnancy-associated glycoprotein 1 antibody at 3µg/ml

Secondary

Goat polyclonal to rabbit IgG at 1/50000 dilution
Predicted band size: 43 kDa
Observed band size: 43 kDa

Usage

For Research Use Only. Not for use in diagnostic or therapeutic procedures.