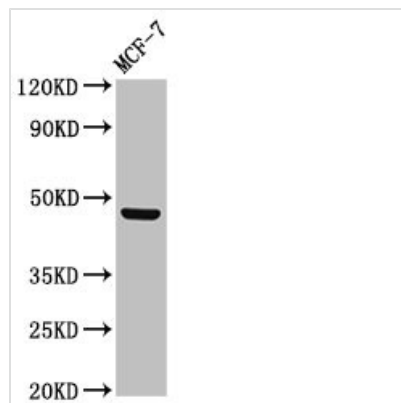




CERS5 Antibody

Product Code	CSB-PA847636LA01HU
Storage	Upon receipt, store at -20°C or -80°C. Avoid repeated freeze.
Uniprot No.	Q8N5B7
Immunogen	Recombinant Human Ceramide synthase 5 protein (332-392AA)
Raised In	Rabbit
Species Reactivity	Human
Tested Applications	ELISA, WB, IHC, IF; Recommended dilution: WB:1:500-1:5000, IHC:1:20-1:200, IF:1:50-1:200
Form	Liquid
Conjugate	Non-conjugated
Storage Buffer	Preservative: 0.03% Proclin 300 Constituents: 50% Glycerol, 0.01M PBS, pH 7.4
Purification Method	>95%, Protein G purified
Isotype	IgG
Clonality	Polyclonal
Alias	Ceramide synthase 5 (CerS5) (EC 2.3.1.24) (LAG1 longevity assurance homolog 5), CERS5, LASS5
Immunogen Species	Homo sapiens (Human)
Research Area	Signal Transduction
Target Names	CERS5

Image



Western Blot

Positive WB detected in: MCF-7 whole cell lysate

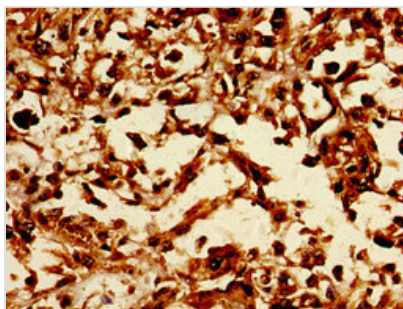
All lanes: CERS5 antibody at 3µg/ml

Secondary

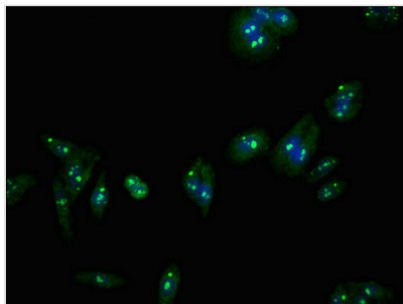
Goat polyclonal to rabbit IgG at 1/50000 dilution

Predicted band size: 46, 40 kDa

Observed band size: 46 kDa



Immunohistochemistry of paraffin-embedded human melanoma using CSB-PA847636LA01HU at dilution of 1:100



Immunofluorescent analysis of HepG2 cells using CSB-PA847636LA01HU at dilution of 1:100 and Alexa Fluor 488-conjugated AffiniPure Goat Anti-Rabbit IgG(H+L)