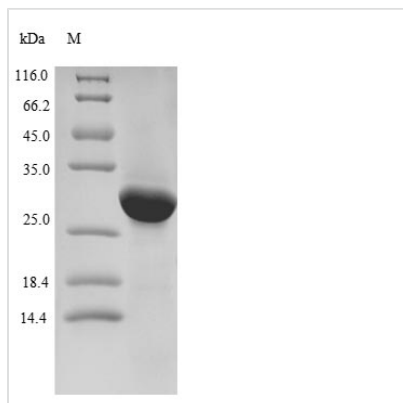




Recombinant Human Phospholipid phosphatase-related protein type 2 (PLPPR2), partial

Product Code	CSB-EP836219HU1
Relevance	"The full-ORF clone resource of the German cDNA consortium." Bechtel S., Rosenfelder H., Duda A., Schmidt C.P., Ernst U., Wellenreuther R., Mehrle A., Schuster C., Bahr A., Bloecker H., Heubner D., Hoerlein A., Michel G., Wedler H., Koehrer K., Ottenwaelder B., Poustka A., Wiemann S., Schupp I. BMC Genomics 8:399-399(2007)
Abbreviation	Recombinant Human PLPPR2 protein, partial
Storage	The shelf life is related to many factors, storage state, buffer ingredients, storage temperature and the stability of the protein itself. Generally, the shelf life of liquid form is 6 months at -20°C/-80°C. The shelf life of lyophilized form is 12 months at -20°C/-80°C.
Uniprot No.	Q96GM1
Product Type	Recombinant Protein
Immunogen Species	Homo sapiens (Human)
Purity	≥ 85% as determined by SDS-PAGE.
Sequence	MAGGRPHLKRSFSIIPCFVFVESVLLGIVILLAYRLEFTDTFPVHTQGFFCYDST YAKPYPGPEAASRVPPALVYALVTAGPTLTILLGELARAFFPAPPSAVPVIGEST IVSGACCRFSPVRRLLVRFGLGVYSFGLFTTTIFANAGQVVTGNPTP
Research Area	Signal Transduction
Source	E.coli
Target Names	PLPPR2
Protein Names	Lipid phosphate phosphatase-related protein type 2Plasticity-related gene 4 protein
Expression Region	1-156aa
Notes	Repeated freezing and thawing is not recommended. Store working aliquots at 4°C for up to one week.
Tag Info	N-terminal 6xHis-B2M-tagged
Mol. Weight	30.7kDa
Protein Length	Partial
Image	



(Tris-Glycine gel) Discontinuous SDS-PAGE (reduced) with 5% enrichment gel and 15% separation gel.

Reconstitution

We recommend that this vial be briefly centrifuged prior to opening to bring the contents to the bottom. Please reconstitute protein in deionized sterile water to a concentration of 0.1-1.0 mg/mL. We recommend to add 5-50% of glycerol (final concentration) and aliquot for long-term storage at -20°C/-80°C. Our default final concentration of glycerol is 50%. Customers could use it as reference.

Shelf Life

The shelf life is related to many factors, storage state, buffer ingredients, storage temperature and the stability of the protein itself. Generally, the shelf life of liquid form is 6 months at -20°C/-80°C. The shelf life of lyophilized form is 12 months at -20°C/-80°C.