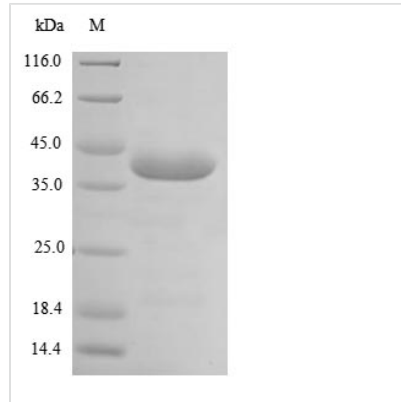




Recombinant Mouse Platelet glycoprotein VI (Gp6), partial

Product Code	CSB-EP009689MO1
Abbreviation	Recombinant Mouse Gp6 protein, partial
Storage	The shelf life is related to many factors, storage state, buffer ingredients, storage temperature and the stability of the protein itself. Generally, the shelf life of liquid form is 6 months at -20°C/-80°C. The shelf life of lyophilized form is 12 months at -20°C/-80°C.
Uniprot No.	P0C191
Product Type	Recombinant Protein
Immunogen Species	Mus musculus (Mouse)
Purity	≥ 85% as determined by SDS-PAGE.
Sequence	QSGPLPKPSLQAQPSSLVPLGQSVILRCQGPPDVDLYRLEKLEKPEKYEDQDFL FIPTMERSNAGRYRCSYQNGSHWSLPSDQLELIATGVYAKPSLSAHPSSAVPQ GRDVTLKCQSPYSFDEFVLYKEGDTGSYKRPEKWYRANFPIITVTAHSGTYR CYSFSSSSPYLWSAPSDPLVLVVTGLSATPSQVPTEESFPVTESSRRPSILPTN KISTTEKPMNITASPEGLSPPFGFAHQHYAK
Research Area	Others
Source	E.coli
Target Names	Gp6
Protein Names	Recommended name: Platelet glycoprotein VI Short name= GPVI Alternative name(s): Glycoprotein 5
Expression Region	22-265aa
Notes	Repeated freezing and thawing is not recommended. Store working aliquots at 4°C for up to one week.
Tag Info	N-terminal 6xHis-SUMO-tagged
Mol. Weight	43.0 kDa
Protein Length	Extracellular Domain

Image



(Tris-Glycine gel) Discontinuous SDS-PAGE (reduced) with 5% enrichment gel and 15% separation gel.

Reconstitution

We recommend that this vial be briefly centrifuged prior to opening to bring the contents to the bottom. Please reconstitute protein in deionized sterile water to a concentration of 0.1-1.0 mg/mL. We recommend to add 5-50% of glycerol (final concentration) and aliquot for long-term storage at $-20^{\circ}\text{C}/-80^{\circ}\text{C}$. Our default final concentration of glycerol is 50%. Customers could use it as reference.

Shelf Life

The shelf life is related to many factors, storage state, buffer ingredients, storage temperature and the stability of the protein itself. Generally, the shelf life of liquid form is 6 months at $-20^{\circ}\text{C}/-80^{\circ}\text{C}$. The shelf life of lyophilized form is 12 months at $-20^{\circ}\text{C}/-80^{\circ}\text{C}$.