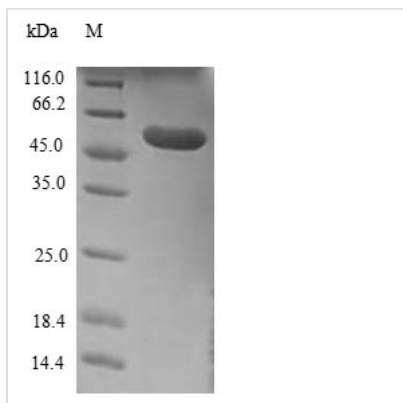




Recombinant Human Extended synaptotagmin-1 (ESYT1), partial, Escherichia Coli

Product Code	CSB-EP866274HU
Relevance	Binds glycerophospholipids in a barrel-like domain and may play a role in cellular lipid transport . Binds calcium (via the C2 domains) and translocates to sites of contact between the endoplasmic reticulum and the cell mbrane in response to increased cytosolic calcium levels. Helps tether the endoplasmic reticulum to the cell mbrane and promotes the formation of appositions between the endoplasmic reticulum and the cell mbrane.
Abbreviation	Recombinant Human ESYT1 protein, partial
Storage	The shelf life is related to many factors, storage state, buffer ingredients, storage temperature and the stability of the protein itself. Generally, the shelf life of liquid form is 6 months at -20°C/-80°C. The shelf life of lyophilized form is 12 months at -20°C/-80°C.
Uniprot No.	Q9BSJ8
Product Type	Recombinant Proteins
Immunogen Species	Homo sapiens (Human)
Purity	≥ 90% as determined by SDS-PAGE.
Sequence	MERSPGEGPSPSPMDQPSAPSDPTDQPPAAHAKPDPGSGGQPAGPGAAGE ALAVLTSFGRLLVLIPVYLAGAVGLSVGFVLFGLALYLGWRRVRDEKERSLRA ARQLLDDEEQLTAKTLYMSHRELPWVSFPDVEKAEWLNKIVAQVWPFLGQY MEKLLAETVAPAVRGSNPHLQTFTFTRVELGEKPLRIIGVKVHPGQRKEQILLD LNISYVGDVQIDVEVKKYFCKAGVKGMQLHGVLRV
Source	E.coli
Target Names	ESYT1
Expression Region	1-245aa
Notes	Repeated freezing and thawing is not recommended. Store working aliquots at 4°C for up to one week.
Tag Info	N-terminal GST-tagged
Mol. Weight	53.7kDa
Protein Length	Partial
Image	



(Tris-Glycine gel) Discontinuous SDS-PAGE (reduced) with 5% enrichment gel and 15% separation gel.

Shelf Life

The shelf life is related to many factors, storage state, buffer ingredients, storage temperature and the stability of the protein itself.

Generally, the shelf life of liquid form is 6 months at -20°C/-80°C. The shelf life of lyophilized form is 12 months at -20°C/-80°C.