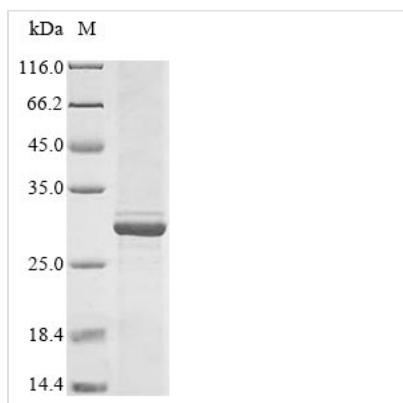




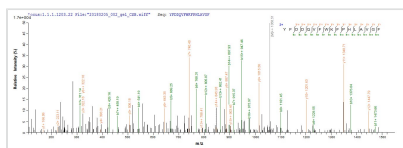
# Recombinant Human Blood group Rh (D) polypeptide (RHD), partial

<b>Product Code</b>	CSB-MP019677HU
<b>Relevance</b>	May be part of an oligomeric complex which is likely to have a transport or channel function in the erythrocyte membrane.
<b>Abbreviation</b>	Recombinant Human RHD protein, partial
<b>Storage</b>	The shelf life is related to many factors, storage state, buffer ingredients, storage temperature and the stability of the protein itself. Generally, the shelf life of liquid form is 6 months at -20°C/-80°C. The shelf life of lyophilized form is 12 months at -20°C/-80°C.
<b>Uniprot No.</b>	Q02161
<b>Product Type</b>	Recombinant Protein
<b>Immunogen Species</b>	Homo sapiens (Human)
<b>Purity</b>	≥ 85% as determined by SDS-PAGE.
<b>Sequence</b>	LNLKIWKAPHEAKYFDDQVFWKFPHLAVGF
<b>Research Area</b>	Cardiovascular
<b>Source</b>	Mammalian cell
<b>Target Names</b>	RHD
<b>Protein Names</b>	RHXIII Rh polypeptide 2 Short name: RhPII Rhesus D antigen CD_antigen: CD240D
<b>Expression Region</b>	388-417aa
<b>Notes</b>	Repeated freezing and thawing is not recommended. Store working aliquots at 4°C for up to one week.
<b>Tag Info</b>	N-terminal GST-tagged
<b>Mol. Weight</b>	29.6 kDa
<b>Protein Length</b>	Partial

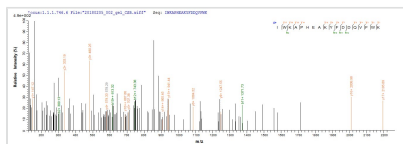
## Image



(Tris-Glycine gel) Discontinuous SDS-PAGE (reduced) with 5% enrichment gel and 15% separation gel.



Based on the SEQUEST from database of Mammalian Cell host and target protein, the LC-MS/MS Analysis result of CSB-MP019677HU could indicate that this peptide derived from Mammalian Cell-expressed Homo sapiens (Human) RHD.



Based on the SEQUEST from database of Mammalian Cell host and target protein, the LC-MS/MS Analysis result of CSB-MP019677HU could indicate that this peptide derived from Mammalian Cell-expressed Homo sapiens (Human) RHD.

### Reconstitution

We recommend that this vial be briefly centrifuged prior to opening to bring the contents to the bottom. Please reconstitute protein in deionized sterile water to a concentration of 0.1-1.0 mg/mL. We recommend to add 5-50% of glycerol (final concentration) and aliquot for long-term storage at -20°C/-80°C. Our default final concentration of glycerol is 50%. Customers could use it as reference.

### Shelf Life

The shelf life is related to many factors, storage state, buffer ingredients, storage temperature and the stability of the protein itself. Generally, the shelf life of liquid form is 6 months at -20°C/-80°C. The shelf life of lyophilized form is 12 months at -20°C/-80°C.