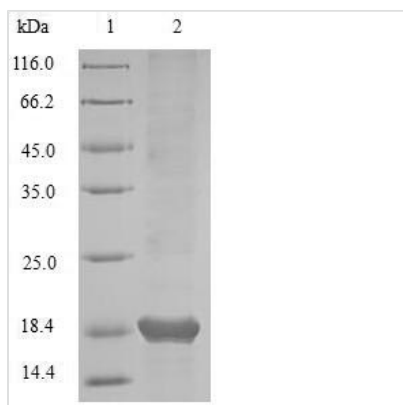




Recombinant Hepatitis C virus genotype 1a Genome polyprotein, partial

Product Code	CSB-MP333180HFD
Relevance	Capsid proteins VP1, VP2, and VP3 form a closed capsid enclosing the viral positive strand RNA genome. All these proteins contain a beta-sheet structure called beta-barrel jelly roll. Together they form an icosahedral capsid (T=3) composed of 60 copies of each VP1, VP2, and VP3, with a diameter of approximately 300 Angstroms. VP1 is situated at the 12 fivefold axes, whereas VP2 and VP3 are located at the quasi-sixfold axes. The capsid interacts with HAVCR1 to provide virion attachment to target cell.
Abbreviation	Recombinant Hepatitis C virus genotype 1a Genome polyprotein, partial
Storage	The shelf life is related to many factors, storage state, buffer ingredients, storage temperature and the stability of the protein itself. Generally, the shelf life of liquid form is 6 months at -20°C/-80°C. The shelf life of lyophilized form is 12 months at -20°C/-80°C.
Uniprot No.	P26664
Product Type	Recombinant Protein
Immunogen Species	Hepatitis C virus genotype 1a (isolate 1) (HCV)
Purity	Greater than 90% as determined by SDS-PAGE.
Sequence	YQVRNSTGLYHVTNDPCNSSIVYEAADAILHTPGCVPCVREGNASRCWVAMT PTVATRDGKLPATQLRRHIDLLVGSATLCSALYVGDLCGSVFLVGQLFTFSPRR HWTTQGCNCSIYPGHITGHRMAWDMMMN
Research Area	Others
Source	Mammalian cell
Expression Region	192-325aa
Notes	Repeated freezing and thawing is not recommended. Store working aliquots at 4°C for up to one week.
Tag Info	C-terminal 6xHis-Myc-tagged
Mol. Weight	18.7kDa
Protein Length	Partial
Image	



(Tris-Glycine gel) Discontinuous SDS-PAGE (reduced) with 5% enrichment gel and 15% separation gel.

Reconstitution

We recommend that this vial be briefly centrifuged prior to opening to bring the contents to the bottom. Please reconstitute protein in deionized sterile water to a concentration of 0.1-1.0 mg/mL. We recommend to add 5-50% of glycerol (final concentration) and aliquot for long-term storage at -20°C/-80°C. Our default final concentration of glycerol is 50%. Customers could use it as reference.

Shelf Life

The shelf life is related to many factors, storage state, buffer ingredients, storage temperature and the stability of the protein itself. Generally, the shelf life of liquid form is 6 months at -20°C/-80°C. The shelf life of lyophilized form is 12 months at -20°C/-80°C.