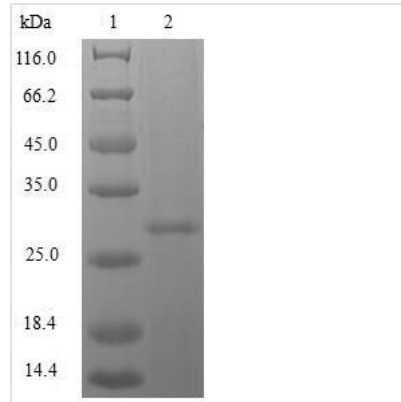




Recombinant Rat Glucagon-like peptide 1 receptor (Glp1r), partial

Product Code	CSB-BP009514RA
Relevance	G-protein coupled receptor for glucagon-like peptide 1 (GLP-1). Ligand binding triggers activation of a signaling cascade that leads to the activation of adenylyl cyclase and increased intracellular cAMP levels. Plays a role in regulating insulin secretion in response to GLP-1
Storage	The shelf life is related to many factors, storage state, buffer ingredients, storage temperature and the stability of the protein itself. Generally, the shelf life of liquid form is 6 months at -20°C/-80°C. The shelf life of lyophilized form is 12 months at -20°C/-80°C.
Uniprot No.	P32301
Product Type	Recombinant Protein
Immunogen Species	Rattus norvegicus (Rat)
Purity	Greater than 85% as determined by SDS-PAGE.
Sequence	GPRPQGATVSLSETVQKWREYRHQCQRFLTEAPLLATGLFCNRTFDDYACW PDGPPGSFVNVSCPWYLPWASSVLQGHVYRFCTAEGIWLHKDNSSLPWRDL SECEESKQGGERN
Research Area	Neuroscience
Source	Baculovirus
Target Names	Glp1r
Protein Names	Glpr
Expression Region	22-135aa
Notes	Repeated freezing and thawing is not recommended. Store working aliquots at 4°C for up to one week.
Tag Info	N-terminal 10xHis-tagged
Mol. Weight	15.6 kDa
Protein Length	Partial

Image



(Tris-Glycine gel) Discontinuous SDS-PAGE (reduced) with 5% enrichment gel and 15% separation gel.

Shelf Life

The shelf life is related to many factors, storage state, buffer ingredients, storage temperature and the stability of the protein itself.

Generally, the shelf life of liquid form is 6 months at -20°C/-80°C. The shelf life of lyophilized form is 12 months at -20°C/-80°C.