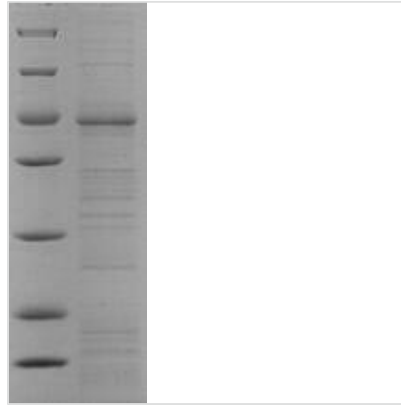




Recombinant Human Endothelin-1 receptor (EDNRA)

Product Code	CSB-CF007403HU
Relevance	Receptor for endothelin-1. Mediates its action by association with G proteins that activate a phosphatidylinositol-calcium second messenger system. The rank order of binding affinities for ET-A is: ET1 > ET2 >> ET3.
Abbreviation	Recombinant Human EDNRA protein
Storage	The shelf life is related to many factors, storage state, buffer ingredients, storage temperature and the stability of the protein itself. Generally, the shelf life of liquid form is 6 months at -20°C/-80°C. The shelf life of lyophilized form is 12 months at -20°C/-80°C.
Uniprot No.	P25101
Product Type	Transmembrane Protein
Immunogen Species	Homo sapiens (Human)
Purity	≥ 90% as determined by SDS-PAGE.
Sequence	DNPERYSTNLSNHVDDFTTFRGTELSFLVTTHQPTNLVLPSTNGSMHNYCPQQ TKITSAFKYINTVISCTIFIVGMVGNATLLRIIYQNKCMRNGPNALIASLALGDLIYV VIDLPINVFKLLAGRWPFDHNDGFLCKLFPFLQKSSVGITVLNLCALSVDYR AVASWSRVQGIGIPLVTAIEIVSIWILSFILAIPEAIGFVMVPFEYRGEQHKTCML NATSKFMEFYQDVKDWLFGFYFCMPLVCTAIFYTLMTCEMLNRRNGSLRIAL SEHLKQRREVAKTVFCLVVIFALCWFLHLSRILKKTVYNEMDKNRCELLSFLLL MDYIGINLATMNSCINPIALYFVSKKFKNCFQSCLCCCCYQSKSLMTSVPMMNGT SIQWKNHDQNNHNTDRSSHKDSMN
Research Area	Signal Transduction
Source	in vitro E.coli expression system
Target Names	EDNRA
Protein Names	Endothelin A receptor
Expression Region	21–427aa
Notes	Repeated freezing and thawing is not recommended. Store working aliquots at 4°C for up to one week.
Tag Info	C-terminal 10xHis-tagged
Mol. Weight	49.9kDa
Protein Length	Full Length of Mature Protein
Image	



(Tris-Glycine gel) Discontinuous SDS-PAGE (reduced) with 5% enrichment gel and 15% separation gel.

Reconstitution

We recommend that this vial be briefly centrifuged prior to opening to bring the contents to the bottom. Please reconstitute protein in deionized sterile water to a concentration of 0.1-1.0 mg/mL. We recommend to add 5-50% of glycerol (final concentration) and aliquot for long-term storage at -20°C/-80°C. Our default final concentration of glycerol is 50%. Customers could use it as reference.

Shelf Life

The shelf life is related to many factors, storage state, buffer ingredients, storage temperature and the stability of the protein itself. Generally, the shelf life of liquid form is 6 months at -20°C/-80°C. The shelf life of lyophilized form is 12 months at -20°C/-80°C.