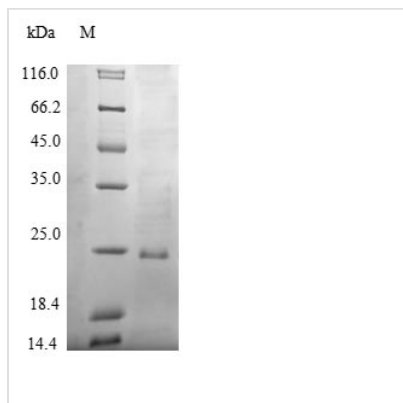




# Recombinant Bovine Pulmonary surfactant-associated protein B (SFTPB), Partial

<b>Product Code</b>	CSB-EP021173BO1
<b>Relevance</b>	Pulmonary surfactant-associated proteins promote alveolar stability by lowering the surface tension at the air-liquid interface in the peripheral air spaces. SP-B increases the collapse pressure of palmitic acid to nearly 70 millinewtons per meter.
<b>Abbreviation</b>	Recombinant Bovine SFTPB protein, partial
<b>Storage</b>	The shelf life is related to many factors, storage state, buffer ingredients, storage temperature and the stability of the protein itself. Generally, the shelf life of liquid form is 6 months at -20°C/-80°C. The shelf life of lyophilized form is 12 months at -20°C/-80°C.
<b>Uniprot No.</b>	P15781
<b>Product Type</b>	Recombinant Protein
<b>Immunogen Species</b>	Bos taurus (Bovine)
<b>Purity</b>	≥ 90% as determined by SDS-PAGE.
<b>Sequence</b>	AAITYSLACAQGPEFWCQSLEQALQCRALGHCLQE VWGHVEADDLCQECENI SRLTKMAKEAIFQDSVRKFLEQECVDLPLKLLAPLCRHLLDTYFPLIIEHFQSH MNPKFICQHVGLCKPRHPEPGKGPEPWGPLLDKLALPLLPGVPQAKPGPQTQ DLSEQL
<b>Research Area</b>	Cell Biology
<b>Source</b>	E.coli
<b>Target Names</b>	SFTPB
<b>Protein Names</b>	6 kDa protein Pulmonary surfactant-associated proteolipid SPL(Phe)
<b>Expression Region</b>	23-187aa
<b>Notes</b>	Repeated freezing and thawing is not recommended. Store working aliquots at 4°C for up to one week.
<b>Tag Info</b>	N-terminal 10xHis-tagged and C-terminal Myc-tagged
<b>Mol. Weight</b>	23.5kDa
<b>Protein Length</b>	Partial
<b>Image</b>	



(Tris-Glycine gel) Discontinuous SDS-PAGE (reduced) with 5% enrichment gel and 15% separation gel.

### Reconstitution

We recommend that this vial be briefly centrifuged prior to opening to bring the contents to the bottom. Please reconstitute protein in deionized sterile water to a concentration of 0.1-1.0 mg/mL. We recommend to add 5-50% of glycerol (final concentration) and aliquot for long-term storage at -20°C/-80°C. Our default final concentration of glycerol is 50%. Customers could use it as reference.

### Shelf Life

The shelf life is related to many factors, storage state, buffer ingredients, storage temperature and the stability of the protein itself. Generally, the shelf life of liquid form is 6 months at -20°C/-80°C. The shelf life of lyophilized form is 12 months at -20°C/-80°C.