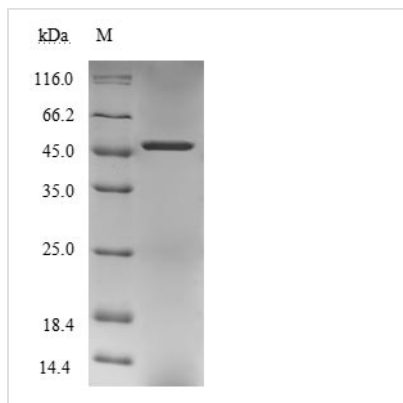




Recombinant Human Paraneoplastic antigen Ma1 (PNMA1)

Product Code	CSB-EP018266HUb9
Relevance	Antibodies against PNMA1 are present in sera from patients suffering of paraneoplastic neurological disorders.
Abbreviation	Recombinant Human PNMA1 protein
Storage	The shelf life is related to many factors, storage state, buffer ingredients, storage temperature and the stability of the protein itself. Generally, the shelf life of liquid form is 6 months at -20°C/-80°C. The shelf life of lyophilized form is 12 months at -20°C/-80°C.
Uniprot No.	Q8ND90
Product Type	Recombinant Protein
Immunogen Species	Homo sapiens (Human)
Purity	Greater than 85% as determined by SDS-PAGE.
Sequence	MAMTLLEDWCRGMDVNSQRALLVWGIPVNCDEAEIEETLQAAMPQVSYRML GRMFWREENAKAALLELTGAVDYAAIPREMPGKGGVWKVLFKPPTSDAEFLE RLHLFLAREGWTVQDVARVLGFGQNPTPTPGPEMPAEMLNLYILDNVIQPLVESI WYKRLTLFSGRDIPGPGGEETFDPWLEHTNEVLEEWQVSDVEKRRRLMESLRG PAADVIRILKSNNPAITTAECLKALEQVFGSVESSRDAQIKFLNTYQNPGEKLSA YVIRLEPLLQKVVEKGAIKDNVNQARLEQVIAGANHSGAIRRQLWLTGAGEG PAPNLFQLLVQIREEEAKEEEEEAEATLLQLGLEGHF
Research Area	others
Source	E.coli
Target Names	PNMA1
Protein Names	37 kDa neuronal protein Neuron- and testis-specific protein 1
Expression Region	1-353aa
Notes	Repeated freezing and thawing is not recommended. Store working aliquots at 4°C for up to one week.
Tag Info	N-terminal 10xHis-B2M-JD-tagged and C-terminal Myc-tagged
Mol. Weight	46.8 kDa
Protein Length	Full Length
Image	



(Tris-Glycine gel) Discontinuous SDS-PAGE (reduced) with 5% enrichment gel and 15% separation gel.

Reconstitution

We recommend that this vial be briefly centrifuged prior to opening to bring the contents to the bottom. Please reconstitute protein in deionized sterile water to a concentration of 0.1-1.0 mg/mL. We recommend to add 5-50% of glycerol (final concentration) and aliquot for long-term storage at -20°C/-80°C. Our default final concentration of glycerol is 50%. Customers could use it as reference.

Shelf Life

The shelf life is related to many factors, storage state, buffer ingredients, storage temperature and the stability of the protein itself. Generally, the shelf life of liquid form is 6 months at -20°C/-80°C. The shelf life of lyophilized form is 12 months at -20°C/-80°C.