



Recombinant Human Endogenous retrovirus group K member 6 Env polyprotein (ERVK-6), partial

Product Code	CSB-EP724336HUa0
Relevance	Retroviral envelope proteins mediate receptor recognition and membrane fusion during early infection. Endogenous envelope proteins may have kept, lost or modified their original function during evolution. This endogenous envelope protein has lost its original fusogenic properties. SU mediates receptor recognition. TM anchors the envelope heterodimer to the viral membrane through one transmembrane domain. The other hydrophobic domain, called fusion peptide, mediates fusion of the viral membrane with the target cell membrane
Abbreviation	Recombinant Human ERVK-6 protein, partial
Storage	The shelf life is related to many factors, storage state, buffer ingredients, storage temperature and the stability of the protein itself. Generally, the shelf life of liquid form is 6 months at -20°C/-80°C. The shelf life of lyophilized form is 12 months at -20°C/-80°C.
Uniprot No.	Q69384
Product Type	Recombinant Protein
Immunogen Species	Homo sapiens (Human)
Purity	Greater than 85% as determined by SDS-PAGE.
Sequence	LPMPAGAAAANYTYWAYVPFPPLIRAVTWMDNPTEVYVNDVWVPGPIDDRCPAKPEEEGMMINISIGYHYPPICLGRAPGCLMPAVQNWLVEVPTVSPICRFTYH MVSGMSLRPRVNYLQDFSYQRSLKFRPKGKPCPKEIPKESKNTEVLVWEECV ANSAVILQNNFEGTIIDWAPRGQFYHNCSGQTQSCPSAQVSPAVIDSDLTESLD KHKHKKLQSFYPWEWGEKGISTPRPKIVSPVSGPEHPELWRLTVASHHIRIWS GNQTLERDRKPFYTIDLNSSLTVPLQSCVKPPYMLVVGNIKIPDSQTITCENC RLLTCIDSTFNWQHRILLVRAREGVWIPVSMRDPWEASPSVHILTEVLKGV LNR SKRFIFTLIAVIMGLIAVTATAAVAGVALHSSVQSVNFVNDWQKNSTR LWNSQS SIDQKLANQINDLRQTVIWMGDRLMSLEHRFQLQCDWNTSDFCITPQIYNESE HHWDMVRRHLQGGREDNLTLDISKLKEQIFEASKAHLNLVPGTEAIAGVADGLA NLNPVTWVKT
Research Area	others
Source	E.coli
Target Names	ERVK-6
Protein Names	EnvK2 proteinEnvelope polyproteinHERV-K(C7) envelope proteinHERV-K(HML-2.HOM) envelope proteinHERV-K108 envelope proteinHERV-K_7p22.1 provirus ancestral Env polyprotein
Expression Region	90-632aa
Notes	Repeated freezing and thawing is not recommended. Store working aliquots at



4°C for up to one week.

Tag Info

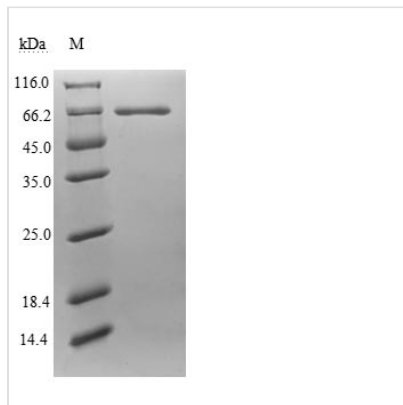
N-terminal 6xHis-tagged

Mol. Weight

65.5 kDa

Protein Length

Extracellular Domain

Image


(Tris-Glycine gel) Discontinuous SDS-PAGE (reduced) with 5% enrichment gel and 15% separation gel.

Reconstitution

We recommend that this vial be briefly centrifuged prior to opening to bring the contents to the bottom. Please reconstitute protein in deionized sterile water to a concentration of 0.1-1.0 mg/mL. We recommend to add 5-50% of glycerol (final concentration) and aliquot for long-term storage at -20°C/-80°C. Our default final concentration of glycerol is 50%. Customers could use it as reference.

Shelf Life

The shelf life is related to many factors, storage state, buffer ingredients, storage temperature and the stability of the protein itself. Generally, the shelf life of liquid form is 6 months at -20°C/-80°C. The shelf life of lyophilized form is 12 months at -20°C/-80°C.