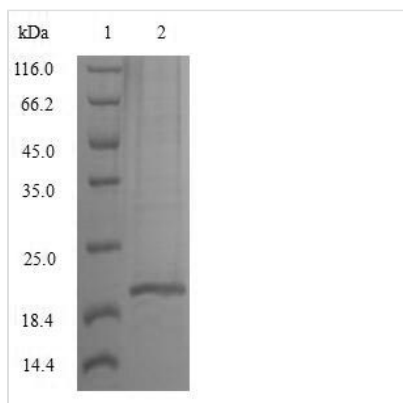




Recombinant Macaca mulatta Interleukin-10 (IL10)

Product Code	CSB-BP011580MOWd7
Relevance	Inhibits the synthesis of a number of cytokines, including IFN-gamma, IL-2, IL-3, TNF and GM-CSF produced by activated macrophages and by helper T-cells.
Abbreviation	Recombinant Rhesus macaque IL10 protein
Storage	The shelf life is related to many factors, storage state, buffer ingredients, storage temperature and the stability of the protein itself. Generally, the shelf life of liquid form is 6 months at -20°C/-80°C. The shelf life of lyophilized form is 12 months at -20°C/-80°C.
Uniprot No.	P51496
Product Type	Recombinant Protein
Immunogen Species	Macaca mulatta (Rhesus macaque)
Purity	Greater than 85% as determined by SDS-PAGE.
Sequence	SPGQGTQSENSCTRFPGNLPHMLRDLRDAFSRVKTFQMKDQLDNILLKESLL EDFKGYLGCQALSEMIQFYLEEVMPPQAENHDPDIKEHVNSLGENLKTLLRRLR RCHRFLPCENKSKAVEQVKNAFSKLQEKGVYKAMSEFDIFINYIEAYMTMKIQN
Research Area	Immunology
Source	Baculovirus
Target Names	IL10
Protein Names	Cytokine synthesis inhibitory factor
Expression Region	19-178aa
Notes	Repeated freezing and thawing is not recommended. Store working aliquots at 4°C for up to one week.
Tag Info	C-terminal 10xHis-tagged
Mol. Weight	21.2 kDa
Protein Length	Full Length of Mature Protein

Image



(Tris-Glycine gel) Discontinuous SDS-PAGE (reduced) with 5% enrichment gel and 15% separation gel.



Reconstitution

We recommend that this vial be briefly centrifuged prior to opening to bring the contents to the bottom. Please reconstitute protein in deionized sterile water to a concentration of 0.1-1.0 mg/mL. We recommend to add 5-50% of glycerol (final concentration) and aliquot for long-term storage at -20°C/-80°C. Our default final concentration of glycerol is 50%. Customers could use it as reference.

Shelf Life

The shelf life is related to many factors, storage state, buffer ingredients, storage temperature and the stability of the protein itself.

Generally, the shelf life of liquid form is 6 months at -20°C/-80°C. The shelf life of lyophilized form is 12 months at -20°C/-80°C.