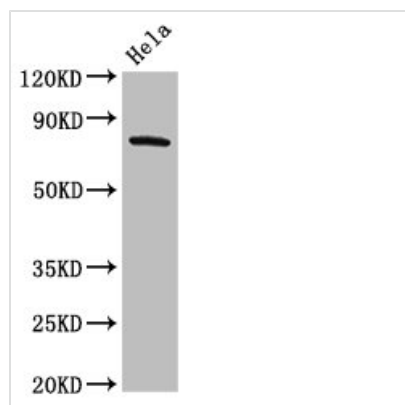




# GRK3 Antibody

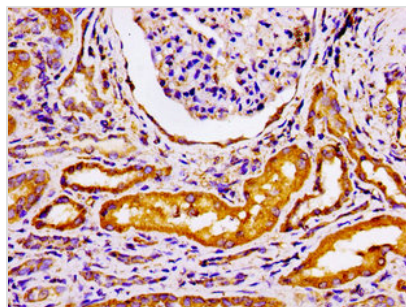
|                            |   |
|----------------------------|---|
| <b>Product Code</b>        | CSB-PA001395LA01HU  |
| <b>Storage</b>             | Upon receipt, store at -20°C or -80°C. Avoid repeated freeze.   |
| <b>Uniprot No.</b>         | P35626  |
| <b>Immunogen</b>           | Recombinant Human Beta-adrenergic receptor kinase 2 protein (343-480AA)   |
| <b>Raised In</b>           | Rabbit  |
| <b>Species Reactivity</b>  | Human   |
| <b>Tested Applications</b> | ELISA, WB, IHC, IF; Recommended dilution: WB:1:500-1:5000, IHC:1:20-1:200, IF:1:50-1:200                                |
| <b>Form</b>                | Liquid  |
| <b>Conjugate</b>           | Non-conjugated  |
| <b>Storage Buffer</b>      | Preservative: 0.03% Proclin 300<br>Constituents: 50% Glycerol, 0.01M PBS, pH 7.4  |
| <b>Purification Method</b> | >95%, Protein G purified  |
| <b>Isotype</b>             | IgG   |
| <b>Clonality</b>           | Polyclonal  |
| <b>Alias</b>               | Beta-adrenergic receptor kinase 2 (Beta-ARK-2) (EC 2.7.11.15) (G-protein-coupled receptor kinase 3), GRK3, ADRBK2 BARK2 |
| <b>Immunogen Species</b>   | Homo sapiens (Human)  |
| <b>Research Area</b>       | Signal Transduction   |
| <b>Target Names</b>        | GRK3  |

## Image

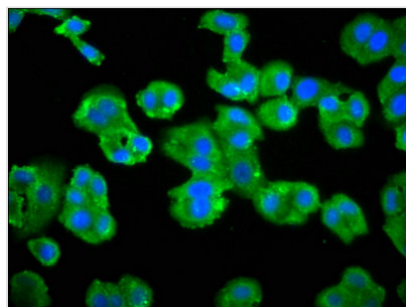


### Western Blot

Positive WB detected in: HeLa whole cell lysate  
 All lanes: GRK3 antibody at 2µg/ml  
 Secondary  
 Goat polyclonal to rabbit IgG at 1/50000 dilution  
 Predicted band size: 80 kDa  
 Observed band size: 80 kDa



Immunohistochemistry of paraffin-embedded human kidney tissue using CSB-PA001395LA01HU at dilution of 1:100



Immunofluorescence staining of HepG2 cells with CSB-PA001395LA01HU at 1:66, counter-stained with DAPI. The cells were fixed in 4% formaldehyde, permeabilized using 0.2% Triton X-100 and blocked in 10% normal Goat Serum. The cells were then incubated with the antibody overnight at 4°C. The secondary antibody was Alexa Fluor 488-conjugated AffiniPure Goat Anti-Rabbit IgG(H+L).

## Usage

For Research Use Only. Not for use in diagnostic or therapeutic procedures.