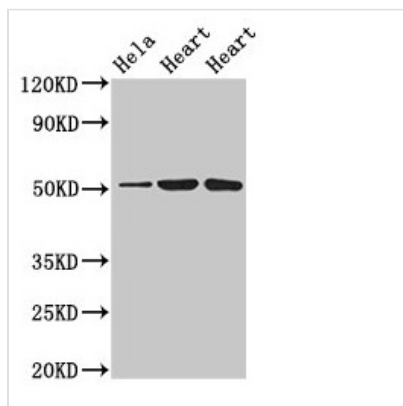




ATP1B1 Antibody

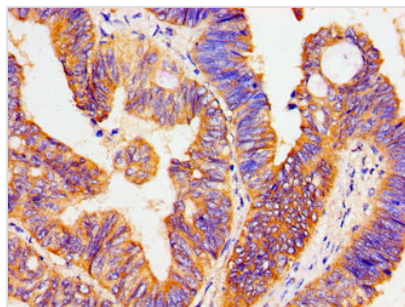
Product Code	CSB-PA002326LA01HU
Storage	Upon receipt, store at -20°C or -80°C. Avoid repeated freeze.
Uniprot No.	P05026
Immunogen	Recombinant Human Sodium/potassium-transporting ATPase subunit beta-1 protein (64-241AA)
Raised In	Rabbit
Species Reactivity	Human, Rat, Mouse
Tested Applications	ELISA, WB, IHC, IF; Recommended dilution: WB:1:500-1:5000, IHC:1:20-1:200, IF:1:50-1:200
Form	Liquid
Conjugate	Non-conjugated
Storage Buffer	Preservative: 0.03% Proclin 300 Constituents: 50% Glycerol, 0.01M PBS, pH 7.4
Purification Method	>95%, Protein G purified
Isotype	IgG
Clonality	Polyclonal
Alias	Sodium/potassium-transporting ATPase subunit beta-1 (Sodium/potassium-dependent ATPase subunit beta-1), ATP1B1, ATP1B
Immunogen Species	Homo sapiens (Human)
Research Area	Signal Transduction
Target Names	ATP1B1

Image

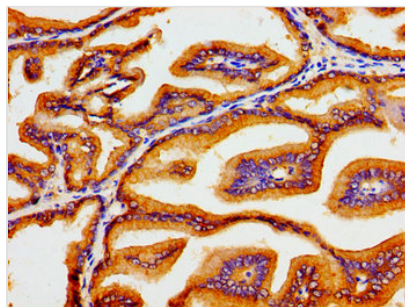


Western Blot

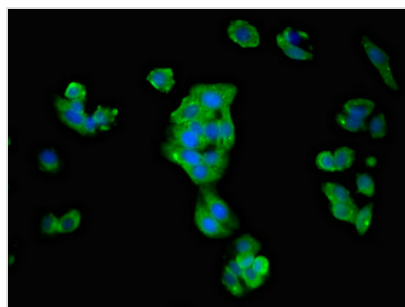
Positive WB detected in: HeLa whole cell lysate, Rat heart tissue, Mouse heart tissue
 All lanes: ATP1B1 antibody at 3µg/ml
 Secondary
 Goat polyclonal to rabbit IgG at 1/50000 dilution
 Predicted band size: 36, 35 kDa
 Observed band size: 52 kDa



Immunohistochemistry of paraffin-embedded human colon cancer using CSB-PA002326LA01HU at dilution of 1:100



Immunohistochemistry of paraffin-embedded human prostate tissue using CSB-PA002326LA01HU at dilution of 1:100



Immunofluorescent analysis of HepG2 cells using CSB-PA002326LA01HU at dilution of 1:100 and Alexa Fluor 488-conjugated AffiniPure Goat Anti-Rabbit IgG(H+L)

Usage

For Research Use Only. Not for use in diagnostic or therapeutic procedures.