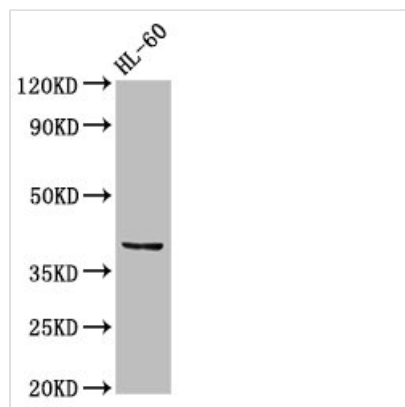




CCRL2 Antibody

Product Code	CSB-PA004852LA01HU
Storage	Upon receipt, store at -20°C or -80°C. Avoid repeated freeze.
Uniprot No.	O00421
Immunogen	Recombinant Human C-C chemokine receptor-like 2 protein (1-43AA)
Raised In	Rabbit
Species Reactivity	Human
Tested Applications	ELISA, WB, IHC; Recommended dilution: WB:1:500-1:5000, IHC:1:20-1:200
Form	Liquid
Conjugate	Non-conjugated
Storage Buffer	Preservative: 0.03% Proclin 300 Constituents: 50% Glycerol, 0.01M PBS, pH 7.4
Purification Method	>95%, Protein G purified
Isotype	IgG
Clonality	Polyclonal
Alias	C-C chemokine receptor-like 2 (Chemokine receptor CCR11) (Chemokine receptor X) (Putative MCP-1 chemokine receptor), CCRL2, CCR11 CCR6 CKRX CRAM HCR
Immunogen Species	Homo sapiens (Human)
Research Area	Immunology
Target Names	CCRL2

Image



Western Blot

Positive WB detected in: HL60 whole cell lysate

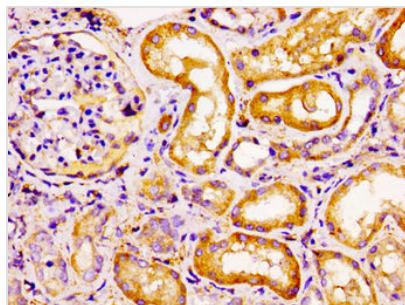
All lanes: CCRL2 antibody at 2.5µg/ml

Secondary

Goat polyclonal to rabbit IgG at 1/50000 dilution

Predicted band size: 40, 41 kDa

Observed band size: 40 kDa



Immunohistochemistry of paraffin-embedded human kidney tissue using CSB-PA004852LA01HU at dilution of 1:100