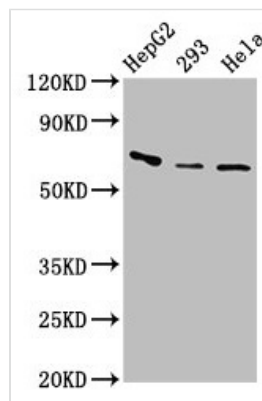




CFI Antibody

Product Code	CSB-PA005279LA01HU
Storage	Upon receipt, store at -20°C or -80°C. Avoid repeated freeze.
Uniprot No.	P05156
Immunogen	Recombinant Human Complement factor I protein (239-316AA)
Raised In	Rabbit
Species Reactivity	Human
Tested Applications	ELISA, WB, IHC; Recommended dilution: WB:1:500-1:5000, IHC:1:20-1:200
Form	Liquid
Conjugate	Non-conjugated
Storage Buffer	Preservative: 0.03% Proclin 300 Constituents: 50% Glycerol, 0.01M PBS, pH 7.4
Purification Method	>95%, Protein G purified
Isotype	IgG
Clonality	Polyclonal
Alias	Complement factor I (EC 3.4.21.45) (C3B/C4B inactivator) [Cleaved into: Complement factor I heavy chain; Complement factor I light chain], CFI, IF
Immunogen Species	Homo sapiens (Human)
Research Area	Immunology
Target Names	CFI

Image



Western Blot

Positive WB detected in: HepG2 whole cell lysate, 293 whole cell lysate, HeLa whole cell lysate

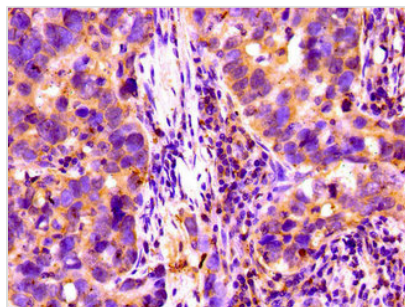
All lanes: CFI antibody at 3.2µg/ml

Secondary

Goat polyclonal to rabbit IgG at 1/50000 dilution

Predicted band size: 66 kDa

Observed band size: 66 kDa



Immunohistochemistry of paraffin-embedded human pancreatic cancer using CSB-PA005279LA01HU at dilution of 1:100

Usage

For Research Use Only. Not for use in diagnostic or therapeutic procedures.