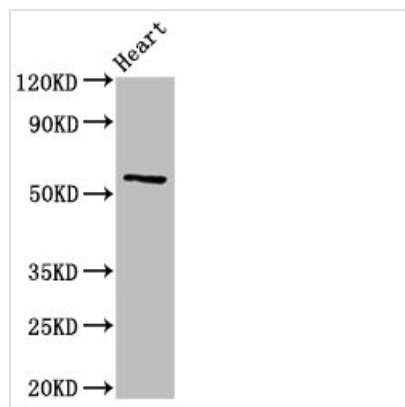




# CYP2A6 Antibody

<b>Product Code</b>	CSB-PA006410LA01HU
<b>Storage</b>	Upon receipt, store at -20°C or -80°C. Avoid repeated freeze.
<b>Uniprot No.</b>	P11509
<b>Immunogen</b>	Recombinant Human Cytochrome P450 2A6 protein (86-267AA)
<b>Raised In</b>	Rabbit
<b>Species Reactivity</b>	Human, Rat
<b>Tested Applications</b>	ELISA, WB; Recommended dilution: WB:1:500-1:5000
<b>Form</b>	Liquid
<b>Conjugate</b>	Non-conjugated
<b>Storage Buffer</b>	Preservative: 0.03% Proclin 300 Constituents: 50% Glycerol, 0.01M PBS, pH 7.4
<b>Purification Method</b>	>95%, Protein G purified
<b>Isotype</b>	IgG
<b>Clonality</b>	Polyclonal
<b>Alias</b>	Cytochrome P450 2A6 (EC 1.14.13.-) (1,4-cineole 2-exo-monooxygenase) (CYP2A6) (Coumarin 7-hydroxylase) (Cytochrome P450 2A6) (Cytochrome P450(I)), CYP2A6, CYP2A3
<b>Immunogen Species</b>	Homo sapiens (Human)
<b>Research Area</b>	Cardiovascular
<b>Target Names</b>	CYP2A6

## Image



### Western Blot

Positive WB detected in: Rat heart tissue

All lanes: CYP2A6 antibody at 3µg/ml

Secondary

Goat polyclonal to rabbit IgG at 1/50000 dilution

Predicted band size: 57 kDa

Observed band size: 57 kDa