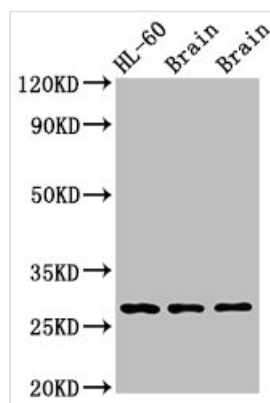




EMX2 Antibody

Product Code	CSB-PA007657LA01HU
Storage	Upon receipt, store at -20°C or -80°C. Avoid repeated freeze.
Uniprot No.	Q04743
Immunogen	Recombinant Human Homeobox protein EMX2 protein (75-141AA)
Raised In	Rabbit
Species Reactivity	Human, Rat, Mouse
Tested Applications	ELISA, WB, IHC; Recommended dilution: WB:1:500-1:5000, IHC:1:20-1:200
Form	Liquid
Conjugate	Non-conjugated
Storage Buffer	Preservative: 0.03% Proclin 300 Constituents: 50% Glycerol, 0.01M PBS, pH 7.4
Purification Method	>95%, Protein G purified
Isotype	IgG
Clonality	Polyclonal
Alias	Homeobox protein EMX2 (Empty spiracles homolog 2) (Empty spiracles-like protein 2), EMX2
Immunogen Species	Homo sapiens (Human)
Research Area	Neuroscience
Target Names	EMX2

Image



Western Blot

Positive WB detected in: Rat brain tissue, Mouse brain tissue

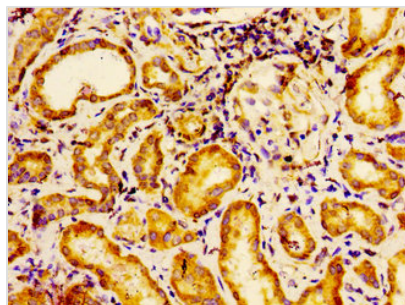
All lanes: EMX2 antibody at 2.7µg/ml

Secondary

Goat polyclonal to rabbit IgG at 1/50000 dilution

Predicted band size: 29, 19 kDa

Observed band size: 29 kDa



Immunohistochemistry of paraffin-embedded human kidney tissue using CSB-PA007657LA01HU at dilution of 1:100

Usage

For Research Use Only. Not for use in diagnostic or therapeutic procedures.