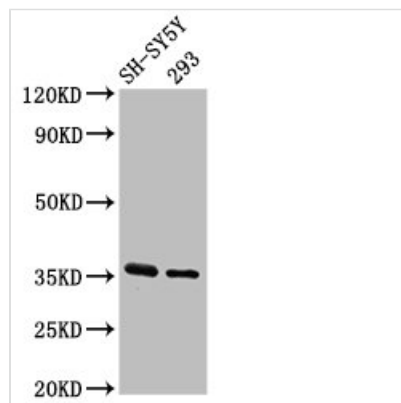




GAS1 Antibody

Product Code	CSB-PA009264LA01HU
Storage	Upon receipt, store at -20°C or -80°C. Avoid repeated freeze.
Uniprot No.	P54826
Immunogen	Recombinant Human Growth arrest-specific protein 1 protein (248-318AA)
Raised In	Rabbit
Species Reactivity	Human
Tested Applications	ELISA, WB, IHC, IF; Recommended dilution: WB:1:500-1:5000, IHC:1:20-1:200, IF:1:50-1:200
Form	Liquid
Conjugate	Non-conjugated
Storage Buffer	Preservative: 0.03% Proclin 300 Constituents: 50% Glycerol, 0.01M PBS, pH 7.4
Purification Method	>95%, Protein G purified
Isotype	IgG
Clonality	Polyclonal
Alias	Growth arrest-specific protein 1 (GAS-1), GAS1
Immunogen Species	Homo sapiens (Human)
Research Area	Cell Biology
Target Names	GAS1

Image



Western Blot

Positive WB detected in: SH-SY5Y whole cell lysate, 293 whole cell lysate

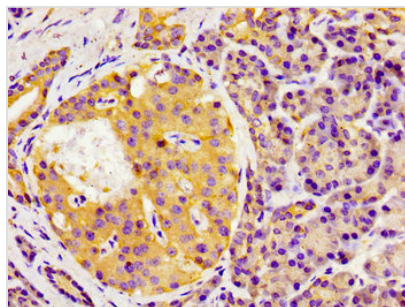
All lanes: GAS1 antibody at 3.2µg/ml

Secondary

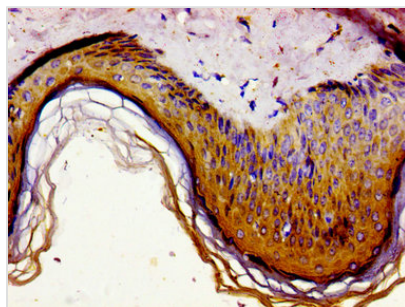
Goat polyclonal to rabbit IgG at 1/50000 dilution

Predicted band size: 36 kDa

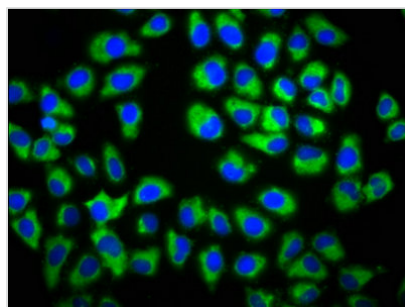
Observed band size: 36 kDa



Immunohistochemistry of paraffin-embedded human pancreatic tissue using CSB-PA009264LA01HU at dilution of 1:100



Immunohistochemistry of paraffin-embedded human skin tissue using CSB-PA009264LA01HU at dilution of 1:100



Immunofluorescence staining of HeLa cells with CSB-PA009264LA01HU at 1:133, counter-stained with DAPI. The cells were fixed in 4% formaldehyde, permeabilized using 0.2% Triton X-100 and blocked in 10% normal Goat Serum. The cells were then incubated with the antibody overnight at 4°C. The secondary antibody was Alexa Fluor 488-conjugated AffiniPure Goat Anti-Rabbit IgG(H+L).

Usage

For Research Use Only. Not for use in diagnostic or therapeutic procedures.