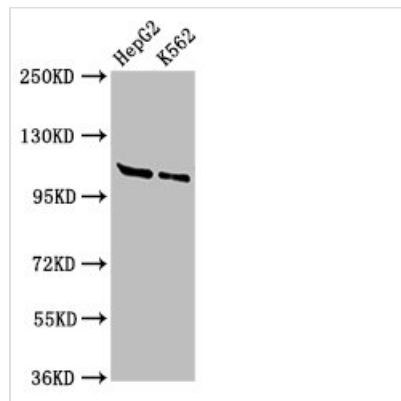




HLTF Antibody

Product Code	CSB-PA010520LA01HU
Storage	Upon receipt, store at -20°C or -80°C. Avoid repeated freeze.
Uniprot No.	Q14527
Immunogen	Recombinant Human Helicase-like transcription factor protein (332-476AA)
Raised In	Rabbit
Species Reactivity	Human
Tested Applications	ELISA, WB, IHC, IP; Recommended dilution: WB:1:500-1:5000, IHC:1:20-1:200, IP:1:200-1:2000
Form	Liquid
Conjugate	Non-conjugated
Storage Buffer	Preservative: 0.03% Proclin 300 Constituents: 50% Glycerol, 0.01M PBS, pH 7.4
Purification Method	>95%, Protein G purified
Isotype	IgG
Clonality	Polyclonal
Alias	Helicase-like transcription factor (EC 2.3.2.27) (EC 3.6.4.-) (DNA-binding protein/plasminogen activator inhibitor 1 regulator) (HIP116) (RING finger protein 80) (RING-type E3 ubiquitin transferase HLTF) (SWI/SNF-related matrix-associated actin-dependent regulator of chromatin subfamily A member 3) (Sucrose nonfermenting protein 2-like 3), HLTF, HIP116A RNF80 SMARCA3 SNF2L3 ZBU1
Immunogen Species	Homo sapiens (Human)
Research Area	Cell Biology
Target Names	HLTF

Image



Western Blot

Positive WB detected in: HepG2 whole cell lysate, K562 whole cell lysate

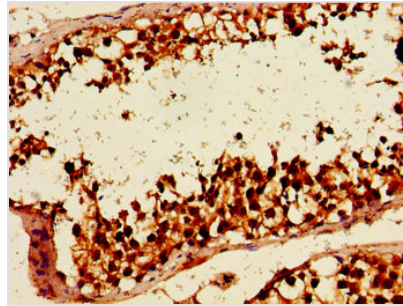
All lanes: HLTF antibody at 3µg/ml

Secondary

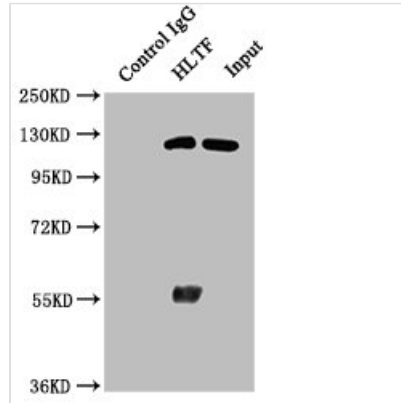
Goat polyclonal to rabbit IgG at 1/50000 dilution

Predicted band size: 114, 100 kDa

Observed band size: 114 kDa



Immunohistochemistry of paraffin-embedded human testis tissue using CSB-PA010520LA01HU at dilution of 1:100



Immunoprecipitating HLTF in HeLa whole cell lysate

Lane 1: Rabbit control IgG instead of CSB-PA010520LA01HU in HeLa whole cell lysate. For western blotting, a HRP-conjugated Protein G antibody was used as the secondary antibody (1/50000)

Lane 2: CSB-PA010520LA01HU (6µg) + HeLa whole cell lysate (1mg)

Lane 3: HeLa whole cell lysate (20µg)

Usage

For Research Use Only. Not for use in diagnostic or therapeutic procedures.