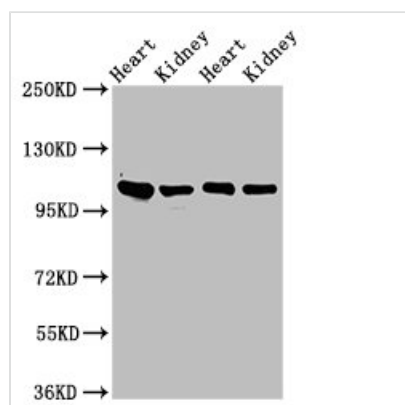




ITGA6 Antibody

Product Code	CSB-PA011869LA01HU
Storage	Upon receipt, store at -20°C or -80°C. Avoid repeated freeze.
Uniprot No.	P23229
Immunogen	Recombinant Human Integrin alpha-6 protein (625-866AA)
Raised In	Rabbit
Species Reactivity	Human, Rat, Mouse
Tested Applications	ELISA, WB, IF; Recommended dilution: WB:1:500-1:5000, IF:1:200-1:500
Form	Liquid
Conjugate	Non-conjugated
Storage Buffer	Preservative: 0.03% Proclin 300 Constituents: 50% Glycerol, 0.01M PBS, pH 7.4
Purification Method	>95%, Protein G purified
Isotype	IgG
Clonality	Polyclonal
Alias	Integrin alpha-6 (CD49 antigen-like family member F) (VLA-6) (CD antigen CD49f) [Cleaved into: Integrin alpha-6 heavy chain; Integrin alpha-6 light chain; Processed integrin alpha-6 (Alpha6p)], ITGA6
Immunogen Species	Homo sapiens (Human)
Research Area	Signal Transduction
Target Names	ITGA6

Image



Western Blot

Positive WB detected in: Rat heart tissue, Rat kidney tissue, Mouse heart tissue, Mouse kidney tissue

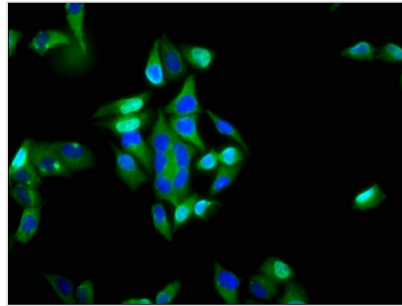
All lanes: ITGA6 antibody at 3µg/ml

Secondary

Goat polyclonal to rabbit IgG at 1/50000 dilution

Predicted band size: 127, 120, 123, 122, 125, 107 kDa

Observed band size: 100 kDa



Immunofluorescence staining of HeLa cells with CSB-PA011869LA01HU at 1:200, counter-stained with DAPI. The cells were fixed in 4% formaldehyde, permeabilized using 0.2% Triton X-100 and blocked in 10% normal Goat Serum. The cells were then incubated with the antibody overnight at 4°C. The secondary antibody was Alexa Fluor 488-conjugated AffiniPure Goat Anti-Rabbit IgG(H+L).