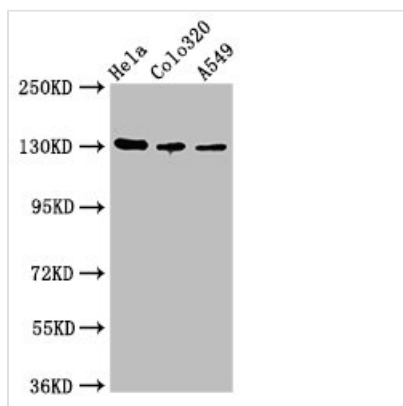




ITGAV Antibody

| | |
|----------------------------|--|
| Product Code | CSB-PA011877LA01HU |
| Storage | Upon receipt, store at -20°C or -80°C. Avoid repeated freeze. |
| Uniprot No. | P06756 |
| Immunogen | Recombinant Human Integrin alpha-V protein (775-885AA) |
| Raised In | Rabbit |
| Species Reactivity | Human |
| Tested Applications | ELISA, WB, IHC, IF; Recommended dilution: WB:1:500-1:5000, IHC:1:20-1:200, IF:1:50-1:200 |
| Form | Liquid |
| Conjugate | Non-conjugated |
| Storage Buffer | Preservative: 0.03% Proclin 300 Constituents: 50% Glycerol, 0.01M PBS, pH 7.4 |
| Purification Method | >95%, Protein G purified |
| Isotype | IgG |
| Clonality | Polyclonal |
| Alias | Integrin alpha-V (Vitronectin receptor) (Vitronectin receptor subunit alpha) (CD antigen CD51) [Cleaved into: Integrin alpha-V heavy chain; Integrin alpha-V light chain], ITGAV, MSK8 VNRA VTNR |
| Immunogen Species | Homo sapiens (Human) |
| Research Area | Cardiovascular |
| Target Names | ITGAV |

Image



Western Blot

Positive WB detected in: HeLa whole cell lysate, Colo320 whole cell lysate, A549 whole cell lysate

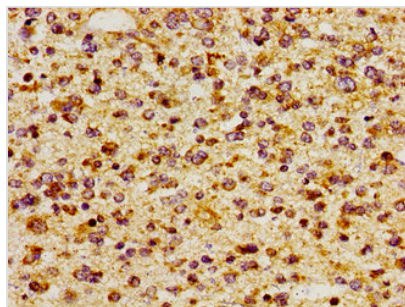
All lanes: ITGAV antibody at 2.7µg/ml

Secondary

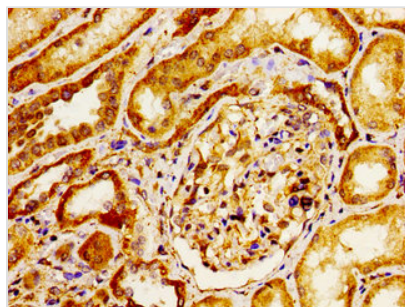
Goat polyclonal to rabbit IgG at 1/50000 dilution

Predicted band size: 117, 113, 112 kDa

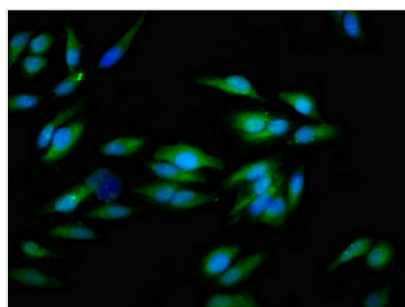
Observed band size: 130 kDa



Immunohistochemistry of paraffin-embedded human glioma using CSB-PA011877LA01HU at dilution of 1:100



Immunohistochemistry of paraffin-embedded human kidney tissue using CSB-PA011877LA01HU at dilution of 1:100



Immunofluorescent analysis of HeLa cells using CSB-PA011877LA01HU at dilution of 1:100 and Alexa Fluor 488-conjugated AffiniPure Goat Anti-Rabbit IgG(H+L)

Usage

For Research Use Only. Not for use in diagnostic or therapeutic procedures.