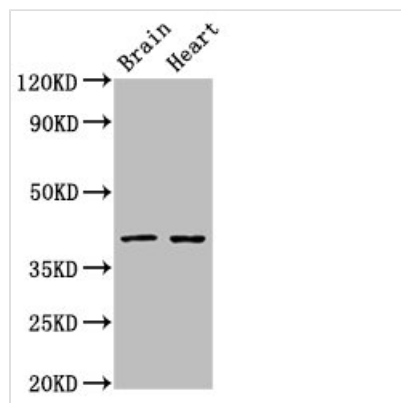




CERS1 Antibody

Product Code	CSB-PA012761LA01HU
Storage	Upon receipt, store at -20°C or -80°C. Avoid repeated freeze.
Uniprot No.	P27544
Immunogen	Recombinant Human Ceramide synthase 1 protein (1-52AA)
Raised In	Rabbit
Species Reactivity	Human, Rat
Tested Applications	ELISA, WB, IHC; Recommended dilution: WB:1:500-1:5000, IHC:1:20-1:200
Form	Liquid
Conjugate	Non-conjugated
Storage Buffer	Preservative: 0.03% Proclin 300 Constituents: 50% Glycerol, 0.01M PBS, pH 7.4
Purification Method	>95%, Protein G purified
Isotype	IgG
Clonality	Polyclonal
Alias	Ceramide synthase 1 (CerS1) (LAG1 longevity assurance homolog 1) (Longevity assurance gene 1 protein homolog 1) (Protein UOG-1), CERS1, LAG1 LASS1 UOG1
Immunogen Species	Homo sapiens (Human)
Research Area	Signal Transduction
Target Names	CERS1

Image



Western Blot

Positive WB detected in: Rat brain tissue, Rat heart tissue

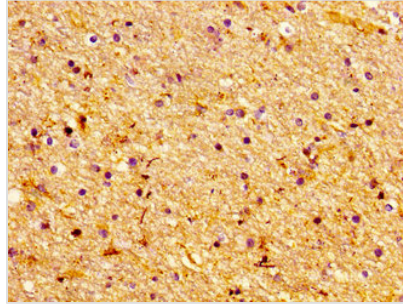
All lanes: CERS1 antibody at 3µg/ml

Secondary

Goat polyclonal to rabbit IgG at 1/50000 dilution

Predicted band size: 40, 38 kDa

Observed band size: 40 kDa



Immunohistochemistry of paraffin-embedded human brain tissue using CSB-PA012761LA01HU at dilution of 1:100

Usage

For Research Use Only. Not for use in diagnostic or therapeutic procedures.