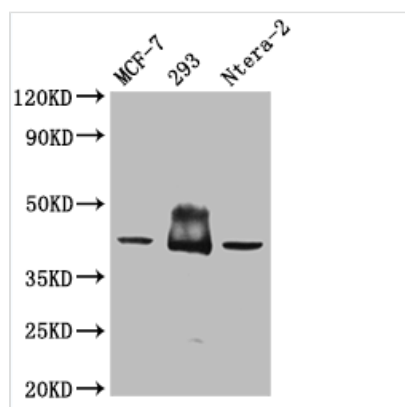




S1PR2 Antibody

Product Code	CSB-PA020651LA01HU
Storage	Upon receipt, store at -20°C or -80°C. Avoid repeated freeze.
Uniprot No.	O95136
Immunogen	Recombinant Human Sphingosine 1-phosphate receptor 2 protein
Raised In	Rabbit
Species Reactivity	Human
Tested Applications	ELISA, WB, IF; Recommended dilution: WB:1:500-1:5000, IF:1:200-1:500
Form	Liquid
Conjugate	Non-conjugated
Storage Buffer	PBS with 0.1% Sodium Azide, 50% Glycerol, pH 7.3
Purification Method	Antigen Affinity purified
Isotype	IgG
Clonality	Polyclonal
Product Type	Polyclonal Antibody
Immunogen Species	Homo sapiens (Human)
Research Area	Neuroscience
Target Names	S1PR2

Image



Western Blot

Positive WB detected in: MCF-7 whole cell lysate, 293 whole cell lysate, Ntera-2 whole cell lysate

All lanes: S1PR2 antibody at 1:500

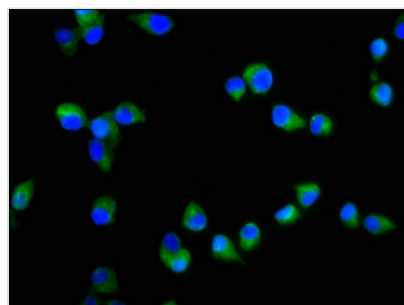
Secondary

Goat polyclonal to rabbit IgG at 1/50000 dilution

Predicted band size: 39 KDa

Observed band size: 40-50 KDa

Exposure time?5min



Immunofluorescence staining of SH-SY5Y cells with CSB-PA020651LA01HU at 1:200, counter-stained with DAPI. The cells were fixed in 4% formaldehyde, permeabilized using 0.2% Triton X-100 and blocked in 10% normal Goat Serum. The cells were then incubated with the antibody overnight at 4°C. The secondary antibody was Alexa Fluor 488-conjugated AffiniPure Goat Anti-Rabbit IgG(H+L).