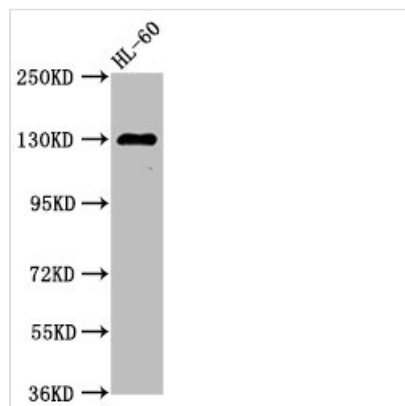




SIPA1 Antibody

Product Code	CSB-PA021330LA01HU
Storage	Upon receipt, store at -20°C or -80°C. Avoid repeated freeze.
Uniprot No.	Q96FS4
Immunogen	Recombinant Human Signal-induced proliferation-associated protein 1 protein (759-927AA)
Raised In	Rabbit
Species Reactivity	Human
Tested Applications	ELISA, WB, IHC, IF; Recommended dilution: WB:1:500-1:5000, IHC:1:20-1:200, IF:1:50-1:200
Form	Liquid
Conjugate	Non-conjugated
Storage Buffer	Preservative: 0.03% Proclin 300 Constituents: 50% Glycerol, 0.01M PBS, pH 7.4
Purification Method	>95%, Protein G purified
Isotype	IgG
Clonality	Polyclonal
Alias	Signal-induced proliferation-associated protein 1 (Sipa-1) (GTPase-activating protein Spa-1) (p130 SPA-1), SIPA1, SPA1
Immunogen Species	Homo sapiens (Human)
Research Area	Cell Biology
Target Names	SIPA1

Image



Western Blot

Positive WB detected in: HL60 whole cell lysate

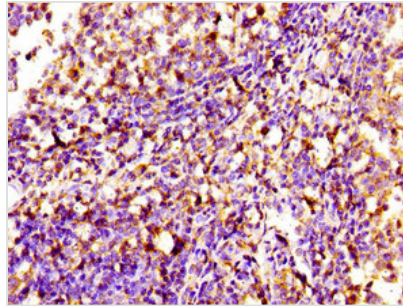
All lanes: SIPA1 antibody at 2.7µg/ml

Secondary

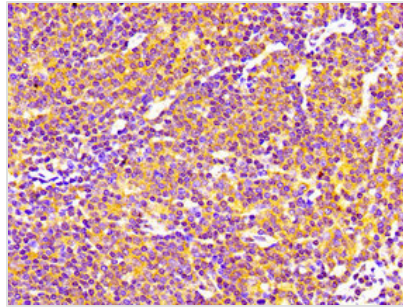
Goat polyclonal to rabbit IgG at 1/50000 dilution

Predicted band size: 112 kDa

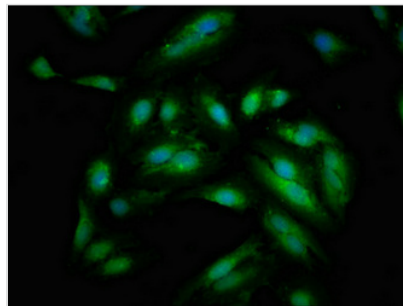
Observed band size: 130 kDa



Immunohistochemistry of paraffin-embedded human tonsil tissue using CSB-PA021330LA01HU at dilution of 1:100



Immunohistochemistry of paraffin-embedded human lymph node tissue using CSB-PA021330LA01HU at dilution of 1:100



Immunofluorescent analysis of Hela cells using CSB-PA021330LA01HU at dilution of 1:100 and Alexa Fluor 488-conjugated AffiniPure Goat Anti-Rabbit IgG(H+L)