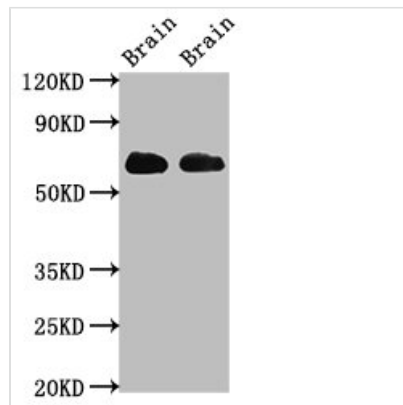




SLC1A2 Antibody

Product Code	CSB-PA021433LA01HU
Storage	Upon receipt, store at -20°C or -80°C. Avoid repeated freeze.
Uniprot No.	P43004
Immunogen	Recombinant Human Excitatory amino acid transporter 2 protein (460-574AA)
Raised In	Rabbit
Species Reactivity	Human, Rat, Mouse
Tested Applications	ELISA, WB, IHC, IF; Recommended dilution: WB:1:500-1:5000, IHC:1:20-1:200, IF:1:50-1:200
Form	Liquid
Conjugate	Non-conjugated
Storage Buffer	Preservative: 0.03% Proclin 300 Constituents: 50% Glycerol, 0.01M PBS, pH 7.4
Purification Method	>95%, Protein G purified
Isotype	IgG
Clonality	Polyclonal
Alias	Excitatory amino acid transporter 2 (Glutamate/aspartate transporter II) (Sodium-dependent glutamate/aspartate transporter 2) (Solute carrier family 1 member 2), SLC1A2, EAAT2 GLT1
Immunogen Species	Homo sapiens (Human)
Research Area	Neuroscience
Target Names	SLC1A2

Image



Western Blot

Positive WB detected in: Rat brain tissue, Mouse brain tissue

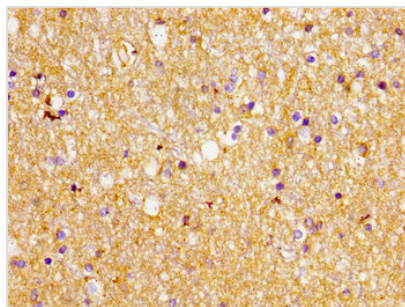
All lanes: SLC1A2 antibody at 3.2µg/ml

Secondary

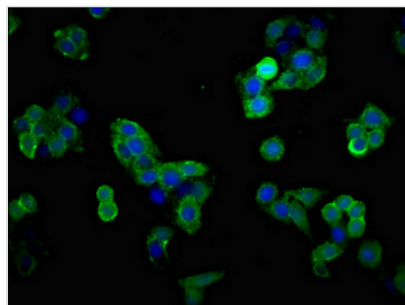
Goat polyclonal to rabbit IgG at 1/50000 dilution

Predicted band size: 63, 62 kDa

Observed band size: 63 kDa



Immunohistochemistry of paraffin-embedded human brain tissue using CSB-PA021433LA01HU at dilution of 1:100



Immunofluorescent analysis of PC-3 cells using CSB-PA021433LA01HU at dilution of 1:100 and Alexa Fluor 488-conjugated AffiniPure Goat Anti-Rabbit IgG(H+L)